

## Solar Storage Container Solutions

# How to match batteries with signal base stations



## Overview

---

What makes a telecom battery pack compatible with a base station?

Compatibility and Installation Voltage Compatibility: 48V is the standard voltage for telecom base stations, so the battery pack's output voltage must align with base station equipment requirements. Modular Design: A modular structure simplifies installation, maintenance, and scalability.

Which battery is best for telecom base station backup power?

Among various battery technologies, Lithium Iron Phosphate (LiFePO<sub>4</sub>) batteries stand out as the ideal choice for telecom base station backup power due to their high safety, long lifespan, and excellent thermal stability.

How do you protect a telecom base station?

Backup power systems in telecom base stations often operate for extended periods, making thermal management critical. Key suggestions include: Cooling System: Install fans or heat sinks inside the battery pack to ensure efficient heat dissipation.

Can a battery group be used as a backup power supply?

In practice, the battery groups (either traditional lead-acid batteries or emerging lithium ones) are deployed as the backup power supply of BSs. In our scenario, one battery group could be shared by multiple BSs nearby to exploit the statistical multiplexing gain, and the multiple BSs sharing the same battery group form a virtual cell (VC).

When should a battery pack be balanced?

Assuming the battery pack will be balanced the first time it is charged and in use. Also, assuming the cells are assembled in series. If the cells are very different in State of Charge (SoC) when assembled the Battery Management System (BMS) will have to gross balance the cells on the first charge.

Why is backup power important in a 5G base station?

With the rapid expansion of 5G networks and the continuous upgrade of global communication infrastructure, the reliability and stability of telecom base stations have become critical. As the core nodes of communication networks, the performance of a base station's backup power system directly impacts network continuity and service quality.

## How to match batteries with signal base stations

---



### Optimal configuration of 5G base station energy storage ...

Feb 1, 2022 · The high-energy consumption and high construction density of 5G base stations have greatly increased the demand for backup energy storage batteries. To maximize overall ...

### How to Safely Connect a Battery to an Inverter: A ...

Apr 13, 2025 · Learn how to safely connect your batteries to your inverter with our guide. Avoid common wiring mistakes to optimize performance and extend ...



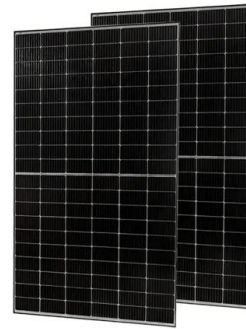
### An optimal dispatch strategy for 5G base stations equipped with battery

Therefore, this paper proposes an optimal dispatch strategy for 5G BSs equipped with BSCs. Firstly, a joint dispatch framework is established, where the idle capacity of batteries in 5G BS ...

### Selection and maintenance of batteries for communication base stations

Focused on the engineering applications of

batteries in the communication stations, this paper introduces the selections, installations and maintenances of batteries for communication ...



## Optimal Electricity Dispatch for Base Stations with Battery ...

Jul 11, 2022 · With the development of newer communication technology, considering the higher electricity consumption and denser physical distribution, the base stations become

## Understanding Base Transceiver Stations: The Backbone of ...

Jan 1, 2025 · What is Base Transceiver Station? A Base Transceiver Station (BTS) is a piece of equipment that facilitates wireless communication between a mobile device and a network. ...

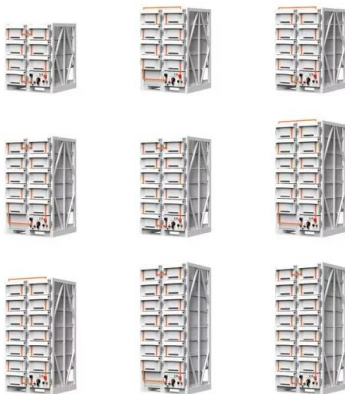


## ?MANLY Battery?Lithium batteries for communication base stations ...

Mar 6, 2021 · Matching lithium batteries in base station systems has become a general trend in recent years, and the energy storage market for communication base stations will once again ...

## How about base station energy storage batteries ...

Apr 7, 2024 · One significant aspect of these batteries is their ability to improve grid resilience, which is crucial in areas prone to power interruptions. This ...



## How to enhance the signal strength and coverage of base stations

Oct 24, 2024 · For example, in some signal blind spots or areas with poor signal quality, local interference methods can be used to guide GPS signals to concentrate coverage, which can ...

## Optimal Backup Power Allocation for 5G Base Stations

Feb 18, 2022 · As illustrated in Fig. 4.1, one backup battery group can be shared among multiple small BSs (whose signal ranges are also covered by the nearby macro BS). Especially for the ...



## Optimal Backup Power Allocation for 5G Base Stations

May 17, 2022 · Motivation and Opportunities To deploy backup batteries for BSs in 5G net-works, however, demands a huge investment, especially considering that the Telecom revenue ...

## Base station operation guidelines

Jul 23, 2025 · Base station operation guidelines  
This topic introduces the concept of base station operation, provides information to help you identify good setup locations, describes best ...



1075KWHH ESS



## Optimum sizing and configuration of electrical system for

Jul 1, 2025 · The rising demand for cost effective, sustainable and reliable energy solutions for telecommunication base stations indicates the importance of integration and exploring the ...

## How 5G Base Stations Are Fueling the Energy Storage Battery ...

Ever wondered why your 5G signal doesn't vanish during a storm? Behind those lightning-fast downloads lies an unsung hero: energy storage batteries. As 5G networks mushroom globally ...



## Contact Us

For catalog requests, pricing, or partnerships, please visit:  
<https://www.chrisnell.co.za>