

## Solar Storage Container Solutions

**Which type does a cylindrical lithium battery belong to**



## Overview

---

What are the different types of cylindrical lithium batteries?

There are many types of cylindrical cells, such as 14650, 17490, 18650, 21700, 26650 and so on. Cylindrical lithium batteries are more prevalent in Japanese and Korean lithium battery companies, and there are also companies of appropriate scale in China that produce cylindrical lithium batteries. III.

What is a cylindrical lithium ion battery?

Cylindrical lithium-ion battery cells are a type of rechargeable battery commonly used in a wide range of electronic devices, electric vehicles, and energy storage systems. They are characterized by their cylindrical shape, standardized sizes, and high energy density, making them versatile and suitable for various applications.

Are cylindrical lithium batteries a good choice?

Cylindrical lithium batteries are more suitable for large-volume automated combination production. Large-volume lithium-ion batteries such as electric bicycles and electric motorcycles are basically produced from cylindrical lithium batteries. Not only that, cylindrical lithium batteries are also recognized as green and healthy batteries.

What is the difference between a cylindrical lithium battery and a prismatic battery?

The major differences between both batteries are as under: ● The shape of cylindrical lithium batteries are cylindrical and are made with metal casing, and lithium prismatic cell have a rectangular or square shape. ● Cylindrical batteries have an electrode core surrounded by an electrolyte and separator.

What is a cylindrical lithium ion cell?

The structure of cylindrical lithium-ion cell The round lithium battery refers to the cylindrical lithium-ion cell. The earliest cylindrical lithium-ion cell was the

18650 lithium battery invented by the Japanese company SONY in 1992. Due to the long history of the 18650 cylindrical lithium-ion cell, the popularity of the market is very high.

What is a cylindrical battery?

This durability is why many industries use cylindrical cells in power tools, electric vehicles, and battery banks that experience rough handling or frequent travel. Prismatic cells (rectangular lithium batteries) are encased in a rigid aluminum or steel shell. The shell provides solid protection for stationary or gently handled applications.

## Which type does a cylindrical lithium battery belong to

---



### Analysis of Cylindrical Lithium Battery Advantages and ...

2. The Development History of Cylindrical Lithium Batteries Since Tesla's Battery Day in September 2020 introduced the 4680 large cylindrical cells, these cells have once again ...

### Understanding Cylindrical Lithium-Ion Battery ...

Feb 19, 2025 · In today's technology-driven world, cylindrical lithium-ion batteries are more than just a power source--they are a fundamental component in ...



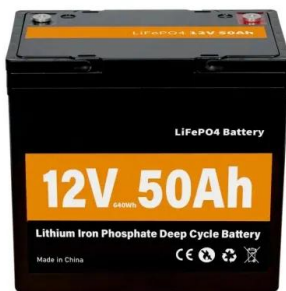
### [LiFePO4 Battery Types] Cylindrical vs. Prismatic ...

Oct 22, 2024 · LiFePO4 batteries, or lithium iron phosphate batteries, are increasingly recognized for their remarkable safety, longevity, and versatility. ...

### Types of Cylindrical Lithium-Ion Cell

Apr 13, 2023 · There are many types of cylindrical cells, such as 14650, 17490, 18650, 21700, 26650 and so on. Cylindrical lithium batteries are more prevalent in Japanese and

Korean ...

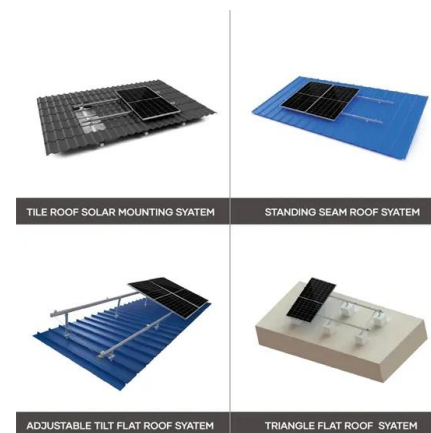


## Cylindrical lithium ion battery - types, ...

Aug 4, 2023 · This article provides an overall introduction of cylindrical lithium ion battery, about its different types and different sizes, also the pros and cons.

## Complete List of Cylindrical Lithium Battery Models.

Cylindrical lithium-ion batteries are usually represented by five digits. Starting from the left, the first and second digits refer to the battery diameter, the third and fourth digits refer to the battery ...

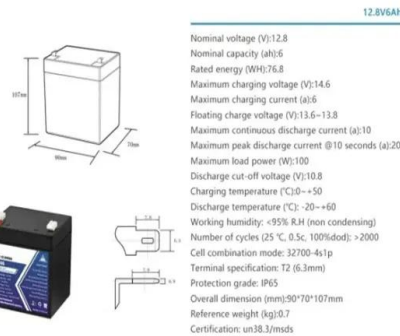


## A Quick Guide to Lithium-Ion Battery Sizes and ...

Apr 27, 2025 · Understand lithium-ion battery sizes like 18650, 14500, and pouch cells, and their applications in gadgets, EVs, and energy storage systems in ...

## Battery Structure Explained: Types & Working ...

Nov 6, 2024 · Discover how lithium-ion batteries function. We break down battery structure, working phases, components, and how different configurations meet ...

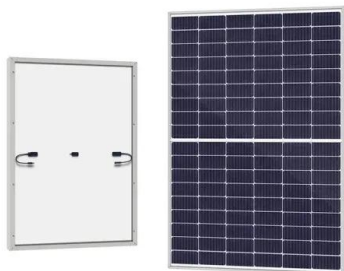


## Battery , Composition, Types, & Uses , Britannica

Aug 6, 2025 · Battery, in electricity and electrochemistry, any of a class of devices that convert chemical energy directly into electrical energy. Although the term ...

## How to Choose a Cylindrical Lithium Battery

Dec 17, 2024 · How do cylindrical lithium batteries compare to other battery types? Cylindrical lithium batteries provide advantages over prismatic and pouch types in terms of durability and ...

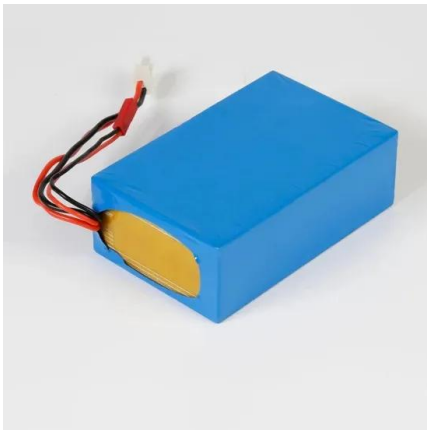


## A Complete Cylindrical Cells Guide: From Basics ...

Jun 29, 2023 · Cylindrical lithium batteries with varying voltage and capacity have entered the market long before. They function similarly to standard battery ...

## Introduction of the Cylindrical Lithium Ion Battery

Apr 13, 2023 · Cylindrical lithium ion batteries are divided into different systems of lithium iron phosphate, lithium cobalt oxide, lithium manganate, cobalt-manganese hybrid, and ternary ...

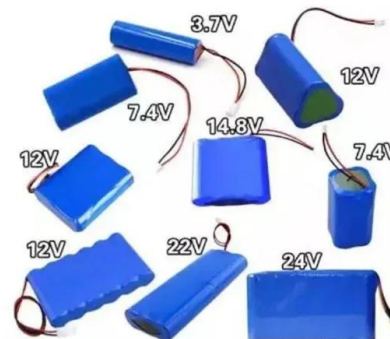


## Why Are Batteries Designed in a Cylinder Shape? An In ...

Feb 21, 2025 · Batteries are predominantly designed in a cylindrical shape due to several structural, manufacturing, and performance-related advantages. This design choice enhances ...

## Everything You Need to Know About Cylindrical Batteries

Apr 24, 2025 · Common cylindrical lithium battery models include 10440, 14500, 16340, 18650, 21700, 26650, and 32650. The 10440 battery is a lithium battery with a diameter of 10 mm and ...



## Lithium-ion Battery Cell Types, LFP, NMC Cells ...

Jul 13, 2022 · There are mainly three types of lithium-ion battery cells used inside EV battery pack; cylindrical cell, prismatic cell, and pouch cell. The cylindrical ...



## Cylindrical Battery Types: What You Need to Know

Jan 30, 2024 · Cylindrical batteries power devices, with types like 21700, 26650, 14500, and 16650, offering reliable energy storage and variations in structure.



## The Ultimate Guide to Cylindrical Lithium-Ion Batteries: Types

Feb 5, 2025 · There are several types of cylindrical lithium-ion batteries, each designed for specific applications. Here's a comparison table outlining the differences among them:

## The best lithium cells for industry

Jan 23, 2020 · The negative aspects of cylindrical lithium ion cells include the low capacity of individual cells, reaching a maximum of 3Ah, and the fact that the cells are assembled in ...



## Tesla Battery Types: Tesla's Ultimate Power ...

Feb 12, 2025 · The 4680-type Tesla battery is a cylindrical lithium-ion battery that is 46 mm in diameter and 80 mm tall. It is significantly larger than the 18650 ...



## Pouch vs. Prismatic vs. Cylindrical? Your Lithium Battery Cell ...

Jul 29, 2025 · The type of battery cell (pouch, prismatic, or cylindrical) is the foundation of your battery's performance, reliability, and safety. Whether you're powering an RV, marine vessel, ...



## Contact Us

---

For catalog requests, pricing, or partnerships, please visit:  
<https://www.chrisnell.co.za>