

## Solar Storage Container Solutions

# What is the normal temperature of the tool battery



## Overview

---

Even though the battery has a specified allowed operational temperature of -20 °C to +60 °C, it will provide the longest service life if temperatures are kept within approximately 10 °C to 40 °C at all times. What temperature should a lithium-ion battery be at?

Most lithium-ion batteries operate safely between -30°C and 55°C, but pushing beyond that means reduced lifespan, power drops, or worse — thermal runaway. This post breaks down exactly how lithium-ion battery temperature limits affect real-world performance and how you can shop smarter, especially in cold weather.

What temperature should a battery be charged at?

Some battery manufacturers recommend keeping charge temps above 5°C (41°F) for optimal health, especially if you want to preserve cycle life. Most battery management systems (BMS) in high-quality packs include a low-temperature charging cut-off, which simply prevents charging until the cell warms up.

What chemistry is used in power tool batteries?

The Power Tool Institute is the leading organization for power tool safety resources, information and education. Li-Ion Batteries . For many years, the chemistry used in power tool batteries was commonly nickel metal hydride (Ni-MH) and nickel cadmium (Ni-Cd).

Are power tool batteries cross-compatible?

For all these safety and compliance considerations, batteries are not cross-compatible (unless specified by the power tool manufacturer). When buying aftermarket batteries for power tools, it is important to consult with the power tool owner's manual and purchase only the batteries recommended by the manufacturer.

What temperature can EBL batteries discharge safely?

EBL batteries can discharge safely in -20°C to 60°C conditions, which is essential for devices used outdoors, from wildlife cameras in snowy Maine to solar-powered lanterns in Texas heat. Temperature affects the electrolyte's flow, which directly influences charging/discharging behavior. Also learn: How do lithium-ion batteries work.

How hot is too hot for a lithium ion battery?

High temperatures are one of the fastest ways to destroy a lithium-ion battery. While most cells are designed to tolerate heat up to around 60°C (140°F), regular exposure to anything over 45°C (113°F) gradually erodes capacity, shortens life, and increases the chance of failure.

## What is the normal temperature of the tool battery

---



### Cold Weather and Rechargeable Tool Batteries: A Deep Dive ...

Jan 6, 2025 · Optimal Storage: For improved longevity and performance, it is recommended to store 20V MAX batteries at room temperature, ideally around 70°F (21°C), and to avoid letting ...

### Pocket Guide Li-Ion battery management

Aug 13, 2025 · Even though the battery has a specified allowed operational temperature of -20 °C to +60 °C, it will provide the longest service life if temperatures are kept within approximately ...



### Lithium Battery Temperature Range: All the information you ...

Jan 17, 2025 · The ambient temperature directly affects the internal temperature of lithium-ion batteries. It is crucial to understand how the lithium battery temperature range affects the ...



### General Lithium Ion Battery Safety

Use and store your battery within the temperature limits stated by the manufacturer.

Do not store in a closed location where sunlight may cause elevated temperatures, such as near a window ...



## What Temperature Should You Leave Power Tool Batteries in ...

Mar 15, 2025 · Store power tool batteries in the garage at 20°C to 25°C (68°F to 77°F) for optimal performance. Avoid storing batteries in temperatures above 86°F to prevent overheating and ...

## Why do batteries overheat and how to avoid it?

Why do batteries overheat and how to avoid it? Battery overheating is an important issue that can occur during battery use, especially when there is high power output or prolonged use. ...



## Temperature Impact on Power Tool Batteries

Ensure Better Storage Conditions: Batteries should be stored in a dry, well-ventilated location with stable temperatures, ideally not below freezing or over 40°C (104°F). Battery performance can ...

## Li-Ion Battery Temperature Sensor: NTC Thermistors for Safety

Feb 13, 2025 · Discover how NTC thermistor Li-ion battery temperature sensors prevent overheating, enhance safety, and extend battery life in EVs, smartphones, and more.



## Li-Ion Battery Safe Temperature: Everything You ...

May 28, 2025 · Most lithium-ion batteries operate safely between -30°C and 55°C, but pushing beyond that means reduced lifespan, power drops, or worse -- ...

## What Temperature Damages Lithium Batteries?

Dec 8, 2023 · What is the ideal temperature range for lithium batteries? The ideal temperature range for lithium batteries is between 32°F (0°C) and 113°F (45°C) during operation and ...



## Cold Weather and Rechargeable Tool Batteries: A Deep Dive ...

Jan 6, 2025 · As winter approaches and temperatures drop, many tool users find themselves questioning how cold weather affects their rechargeable tool batteries, particularly those from ...



## Temperature Fluctuations Affect Power Tool Battery Storage

Oct 28, 2024 · Temperature fluctuations can significantly impact power tool battery storage. Batteries should be stored in a stable environment, ideally between 32°F and 77°F (0°C to ...



## What Is the Operating Temperature of Lead-acid ...

Jan 10, 2024 · The operating temperature of lead-acid batteries typically ranges from -20°C to 50°C (-4°F to 122°F). However, it's important to note that ...



## The Ultimate Guide to Power Tool Battery Care ...

Sep 1, 2023 · Charging your power tool battery at the right temperature is important for preserving battery life. The best practice is to charge your battery ...



## How to Store Lithium Power Tool Batteries

May 14, 2023 · Lithium-ion batteries are a newer technology that offer some advantages over older battery types. They can hold a charge for longer, and they're not as susceptible to ...



## What is the normal temperature of the energy storage battery?

Jul 15, 2024 · The normal temperature of an energy storage battery typically ranges between 1. 20°C to 25°C, 2. with some variations dependent on battery chemistry, 3. the operational ...



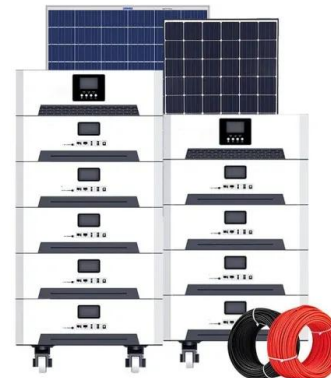
51.2V 150AH, 7.68KWH

## What are VRLA battery temperature considerations?

Jun 17, 2024 · What Are VRLA Battery Temperature Considerations? VRLA batteries are designed to operate within a specific temperature range for optimal performance. Operating ...

## Cold Weather and DEWALT Batteries: What You Need to Know

Dec 10, 2024 · One area that often gets overlooked is how cold temperatures impact the performance and lifespan of power tool batteries, specifically DEWALT batteries. If you're a ...



## Optimal storage temperature and humidity for lithium batteries

4 days ago · Homeowners (Power Tools, E-Bikes) Avoid garages/sheds--temperature swings are brutal. Store batteries indoors in cool, dry areas. Use plastic bins with desiccants for long-term ...



## The Ideal Phone Temperature: How Hot is Too Hot for Your ...

Mar 22, 2025 · As we continue to rely on our smartphones for various aspects of our lives, it's essential to consider the factors that affect their performance and longevity. One often ...



## Understanding the Effects of Temperature on Bosch Power Tool Batteries

Dec 4, 2024 · Recommended Charging Temperature: The ideal range for charging Bosch lithium-ion batteries is between 0°C to +35°C. Charging outside this range can damage the battery. ...

## How to check the battery temperature of laptop? How do I ...

May 23, 2015 · How to check battery temperature? How do I know the normal temperature of it? My OS is Ubuntu, and my laptop is Lenovo G470. Output of acpi -t: Thermal 0: ok, 0.0 degrees C



## Contact Us

For catalog requests, pricing, or partnerships, please visit:  
<https://www.chrisnell.co.za>