

Solar Storage Container Solutions

What does lithium battery ESS mean



Overview

ESS battery is an advanced setup that combines battery technology with power grid connections. It stores and regulates electrical energy. What is ESS battery?

ESS battery is an advanced setup that combines battery technology with power grid connections. It stores and regulates electrical energy. This system is crucial for capturing energy generated by various sources. These include renewable energy from wind turbines and solar panels. ESS ensures a consistent and reliable electricity supply.

What is energy storage system (ESS)?

The term “ESS” stands for “Energy Storage System,” which refers to technologies that store energy for later use, helping to balance supply and demand in energy systems. These systems play a crucial role in integrating renewable energy sources, improving energy efficiency, and providing backup power.

What is ESS battery management system (BMS)?

Modern ESS batteries use advanced chemistries, like lithium-ion or solid-state batteries. These technologies offer enhanced safety. They also provide a long cycle life and high energy density. The Battery Management System (BMS) is an advanced control mechanism.

What is ESS & why is it important?

It stores and regulates electrical energy. This system is crucial for capturing energy generated by various sources. These include renewable energy from wind turbines and solar panels. ESS ensures a consistent and reliable electricity supply. It maintains this supply even when production fluctuates.

What are the different types of ESS batteries?

ESS batteries can use various types of cells, such as lithium-ion, lead-acid, or

even newer technologies like solid-state batteries. Lithium-ion (Li-ion) cells are the most common in ESS applications due to their high energy density, long life cycle, and efficiency. These cells consist of an anode, a cathode, an electrolyte, and a separator.

What components make up an ESS battery?

Let's dive into the primary components that make up an ESS battery. At the core of any ESS battery are the battery cells. These cells are the fundamental units where energy is stored. ESS batteries can use various types of cells, such as lithium-ion, lead-acid, or even newer technologies like solid-state batteries.

What does lithium battery ESS mean

1. ESS introduction & features



Oct 23, 2024 · What is ESS? An Energy Storage System (ESS) is a specific type of power system that integrates a power grid connection with a Victron Inverter/Charger, GX device and battery ...

What Is ESS Meaning Battery?

Jun 6, 2025 · ESS (Energy Storage System) refers to integrated systems designed to store electrical energy for later use, enhancing grid stability and renewable energy utilization. ...

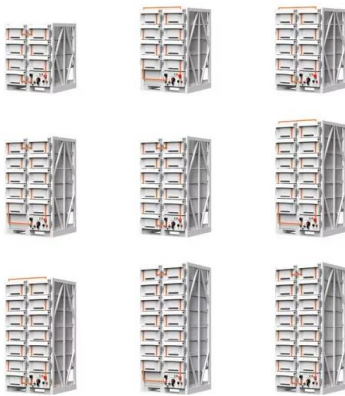


6. Controlling depth of discharge

Oct 23, 2024 · Operating around a low state of charge shortens the life of lead/acid batteries. Certain lithium batteries also need to be fully charged regularly in order to balance their cells. ...

What Is an ESS Home Battery?

Apr 28, 2025 · A Home Energy Storage System (ESS) is a battery-based technology that stores energy for later use, typically sourced from renewable energy systems like solar panels. By ...



What is BESS and what do ESS, EMS, BMS, and DC EV charging mean?

6 days ago · Summary BESS, ESS, EMS, BMS, and DC EV charging are all key elements of EV charging networks and energy management technology. BESS enables energy storage and ...

What Is ESS Battery Storage?

Jun 6, 2025 · ESS (Energy Storage System) battery storage refers to technologies that store electrical energy for later use, often paired with renewable sources like solar or wind. These ...



What Is ESS Battery Meaning?

Jun 6, 2025 · ESS batteries (Energy Storage Systems) are specialized storage units designed to store electrical energy for later use, supporting grid stability, renewable energy integration, and ...

What is an ESS battery? GSL ENERGY takes you through the

...

Jul 10, 2025 · An ESS battery, or Energy Storage System Battery, is a core component of an energy storage system. It is primarily used to convert electrical energy (such as solar or wind

...

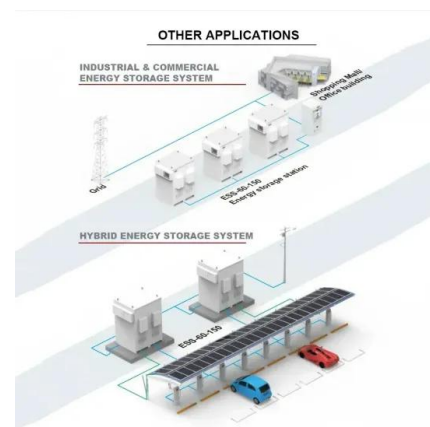


What are the Components of ESS Battery?

Jun 12, 2024 · ESS batteries can use various types of cells, such as lithium-ion, lead-acid, or even newer technologies like solid-state batteries. Lithium-ion (Li-ion) cells are the most common in ...

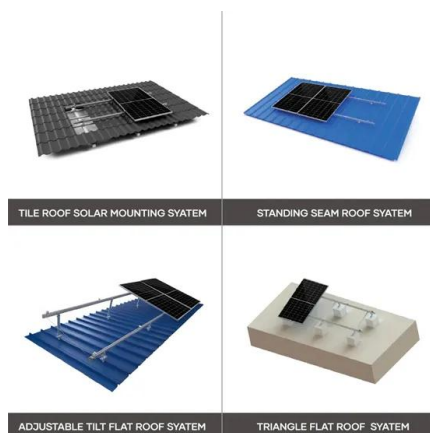
An Ultimate Guide to ESS Batteries

Dec 9, 2024 · Advantages of ESS Batteries ESS batteries offer numerous advantages, contributing to a more sustainable and efficient energy system: Enhancing Energy Efficiency: ...



Understanding Battery Energy Storage System ...

Jan 16, 2023 · Flow battery technology has lower round-trip efficiency compared to Lithium-ion batteries. It means that higher energy is wasted (during charge ...



What Are ESS Batteries?

Jun 6, 2025 · ESS batteries (Energy Storage Systems) are integrated setups designed to store electrical energy for later use, supporting grid stability, renewable energy integration, and ...



What Does ESS, BMS, and Inverter Mean in Solar Systems?

1 day ago · ESS: Energy Storage System An ESS in solar is the full storage package: battery modules, the BMS, power electronics, enclosures, protections, wiring, and controls. In homes, ...

BESS vs ESS: What's the Real Difference?

May 2, 2025 · BESS VS ESS: In the world of new energy and power management, two terms are often used interchangeably -- ESS and BESS. While they are closely related, understanding ...



What Is ESS Lithium Ion Battery?

Jun 6, 2025 · ESS lithium-ion batteries are energy storage systems using lithium-ion chemistry to store electricity for residential, commercial, or grid-scale applications. They feature high ...

Contact Us

For catalog requests, pricing, or partnerships, please visit:
<https://www.chrisnell.co.za>