

Solar Storage Container Solutions

What does 12v600va inverter mean



Overview

How many amps does a 600 watt inverter use?

So if you have a 12 Volt inverter (this is most common but you might have 24V or 48V) you just do this maths: $600W \div 12V = 50Amps$. A 600 watt inverter uses up to 50 amps. Protip: The amps is decided by the appliance you run, not the inverter. For example, you might only draw 100 watts from a 600 watt inverter which would result in 8.3 amps.

How many watts a 600 watt inverter can handle?

Now modern day kitchen mixers are more powerful and power hungry with more than 500 watts, a 600 va inverter cannot handle this load, but an 850 va inverter will handle this load flawlessly. Hope the points I have listed above are enough to help you choose between 600 and 850 va inverters.

How much power does a 12V 600W power inverter use?

According to the measurement of PowMr's engineers, the maximum continuous output current of the 12V 600W power inverter is 60A, and a 12V 1200AH battery is required for 0.2C calculation. Once the battery is operating optimally, it is only necessary to maintain continuous power output.

Which 12V power inverter should I buy?

Perfect for powering home appliances, PowMr's 12V 600W Power Inverter was made for them. The 600W inverter is also designed to be small enough to be installed in a small space, and it is very suitable for emergency use according to its convenience. For traveling, camping, and want to carry a separate power inverter is a good choice.

Should I buy a 600W power inverter?

The 600W inverter is also designed to be small enough to be installed in a small space, and it is very suitable for emergency use according to its convenience. For traveling, camping, and want to carry a separate power

inverter is a good choice. If you want to buy a power inverter, I recommend buying an inverter at PowMr.

What is the difference between 850 VA and 600 VA inverter?

Though 850 VA inverters has many advantages like compatibility with high power Kitchen mixers and $\frac{1}{2}$ hp water pumps, 600 VA inverter is also has its own advantages and some valid reasons to consider. If you are going to use inverter for just powering up your laptop + 2 ceiling fans + 1 tubelight, then a 600 VA inverter is enough for you.

What does 12v600va inverter mean

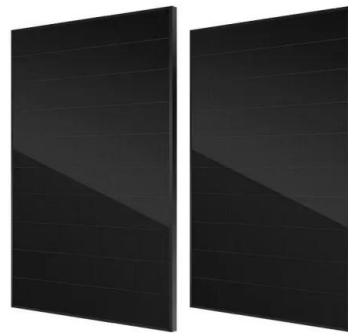


Understanding Split Phase Inverters: A Comprehensive Guide ...

In this comprehensive guide, we will delve into the intricacies of split phase inverters, explaining their working principles and shedding light on their diverse uses. A split phase inverter is a ...

What's the reason for large VA vs W difference ...

Dec 28, 2022 · A sane and efficient inverter is expected to consume input power related to the "real" output power (W) and not to the "apparent" output power ...



Difference VA and W on inverter

Apr 16, 2023 · 1) why with purely resistive loads my inverter has an efficiency below 80% between input and output, while with inductive loads (chargers and motors) I see an efficiency of ...

Inverter Specifications: The difference between ...

5 days ago · In inverter specifications VA refers to Volts x Amps. Volts x Amps is the electrical formula that gives you Watts. Since Watts =

Volts x Amps the ...



What Does Inverter Microwave Oven Mean and Why You ...

Nov 30, 2024 · What Does Inverter Microwave Oven Mean An inverter microwave oven uses advanced technology to maintain consistent power levels during cooking. Unlike traditional ...

What Does Inverter Mean on a Microwave Oven and How It ...

Nov 3, 2024 · Discover the benefits of inverter technology in microwave ovens! This article explains how inverter microwaves provide consistent heat, ensuring even cooking and ...



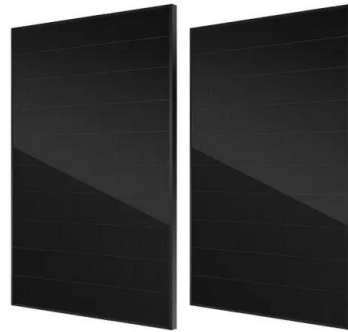
How to Connect Solar Panels in Parallel

Aug 18, 2025 · What does it mean to connect solar panels in parallel When we talk about connecting solar panels in parallel, we're referring to a configuration where all the positive ...



Understanding Inverter Technology in Microwaves: A Game ...

In the world of kitchen appliances, microwaves have become an indispensable tool for quick meal preparation. Among the latest innovations, inverter technology has emerged as a revolutionary ...



What is the Inverter kVA Rating, and the Top 5 ...

6 days ago · In this article, you will get in-depth information about the kVA rating inverter, its application, the difference between KVA vs KW, the top 5 mistakes ...

What Is An Inverter? , Definition, Types, Uses, ...

Jan 25, 2025 · An inverter is a vital electrical device that converts direct current (DC) into alternating current (AC), which is used to power many household ...



Contact Us

For catalog requests, pricing, or partnerships, please visit:
<https://www.chrisnell.co.za>