

Solar Storage Container Solutions

What are the functions of the rooftop communication base station inverter



✓ IP65/IP55 OUTDOOR CABINET

✓ ALUMINUM

✓ OUTDOOR ENERGY STORAGE CABINET

✓ OUTDOOR MODULE CABINET

Overview

How does a base station work?

Here is a simplified explanation of how a base station works: 1. Signal Reception: The base station receives radio signals from mobile devices within its coverage area. These signals are transmitted over the airwaves and contain voice, data, or other information.

What technology makes up a telecom tower site?

The technology that makes up most telecom tower sites can be boiled down to three main categories: communications equipment, energy management, and sensors. The primary function of a tower is to transmit the data that makes up our communications networks. In order to accomplish this, the site uses several different pieces of equipment:.

Why are base stations important for modern telecommunications?

In summary, base stations are critical for modern telecommunications as they serve as the link between mobile devices and the extensive network infrastructure that spans the globe. The strategic deployment and ongoing improvement of these stations are essential for maintaining global connectivity.

What are the components of a base station?

A base station typically consists of the following components: 1. Transceiver: It is the main component of the base station that both transmits and receives signals. It converts the received signals into a format that can be understood by the base station and converts the outgoing signals into a format that can be transmitted over the air. 2.

How does a base station amplify a signal?

Signal Amplification: The received signals are typically weak, so the base station amplifies and strengthens them using sophisticated radio frequency

(RF) equipment. This ensures that the signals are strong enough to be processed and transmitted further.

What is a baseband receiver unit?

Baseband receiver unit – Directly converts the signals to a digital format, encoding and decoding to produce data that is compatible with non-radio systems. Radio frequency power amplifier – Boosts signal strength for outgoing signals. Notably, consumes the majority of a site's power.

What are the functions of the rooftop communication base station i

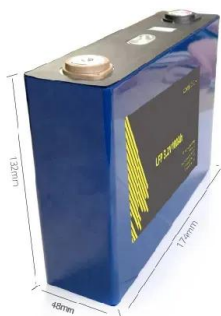
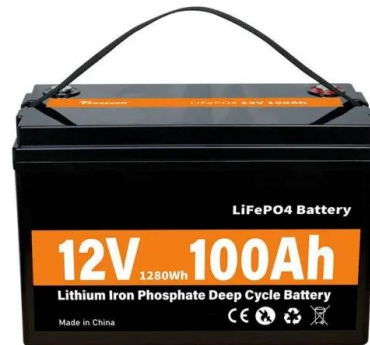


Onboard Base Station: The Communication Hub of the ...

Mar 13, 2025 · The advent of onboard base stations aims to solve these problems. Acting as mobile communication fortresses, they provide crucial communication support in critical ...

What Is A Rooftop Tower? -alttower

Jul 8, 2024 · A rooftop tower, also known as a rooftop base station or rooftop site, refers to a telecommunication tower or antenna system that is installed on the rooftop of a building or ...



What is the function of the Base Station Subsystem (BSS) in ...

Nov 20, 2023 · The Base Station Subsystem (BSS) is a crucial component of the GSM (Global System for Mobile Communications) architecture. It consists of the Base Transceiver Station ...

Communication base station

Dec 23, 2024 · Nevertheless, they still have lingering fears of base station radiation and are trapped in a contradictory state of both needing signals and resisting base stations. The ...



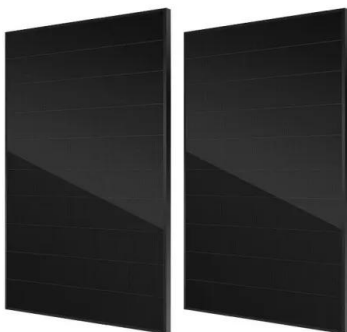
Standard 20ft containers



Standard 40ft containers

Solar Integration: Inverters and Grid Services Basics

4 days ago · If you have a household solar system, your inverter probably performs several functions. In addition to converting your solar energy into AC ...



Detailed explanation of inverter communication ...

Aug 16, 2025 · Usually, each inverter is equipped with a GPRS/4G data collection module. Through the built-in SIM card, the collected data is uploaded to the ...



5G Network Architectures and Technologies

Aug 1, 2025 · gNodeB (gNB): a 5G base station. gNBs are base stations deployed based on 5G standards to provide wireless access to 5G networks. 5G modem: is built into a router to ...

Rooftop tower base station: the 'invisible communication ...

As a crucial part of the modern communication system, rooftop tower base stations bear the responsibility of transmitting and receiving signals. Whether it's our daily mobile phone calls,
...



Efficient Higher Revenue

- Max. Efficiency 97.5%
- Max. PV Input Voltage 600V
- 500W Peak Output Power
- 2 MPPT Trackers, 150V DC Input Overvoltage
- Max. PV Input Current 15A, Compatible with High Power Modules

Intelligent Simple O&M

- IP65 Protection Degree: support outdoor installation
- Smart I-V Curve Diagnosis Function: locate PV string faults accurately and automatically detect faults
- DC & AC Type II SPDs: prevent lightning damage
- Battery Reverse Connection Protection

Flexible Abundant Configuration

- Plug & Play, UPS Switching Under 10ms
- Compatible with Lead Acid and Lithium Batteries
- Max. 6 units Inverters Parallel
- AFCI Function (Optional): when an arc fault is detected the inverter immediately stops operation

#7 Things to Know About Base Station Antennas of Mobile Communication

Oct 20, 2022 · The base station antenna is a crucial component of mobile communication wireless access systems, and numerous factors influence its growth. 1. The base station layout is
...

Rooftop tower base station: the 'invisible communication ...

What is the rooftop tower base station? From a high altitude in the city, the tower base stations on rooftops resemble steel guardians standing at the top of various buildings. It belongs to a type
...



2MW / 5MWh
Customizable



 **LFP 12V 100Ah**

Rooftop Base Station , HuiJue Group E-Site

Each rooftop base station becomes a 3D network probe, mapping signal propagation in real-time. Suddenly, telecom operators aren't just service providers - they're urban digital twin architects.

What Is Base Station in Mobile Communication? - The Heart ...

Jan 11, 2025 · In the era of rapid technological advancements, mobile communication has become an integral part of our daily lives. With the increasing demand for high-speed data and ...



Smart Power of Communication Base Station

Installing a smart switch module at an unattended basic station, the smart switch module can collect data in real time and use the data to display on a visual management platform to help ...



Rooftop Tower Manufacturer

5 days ago · Rooftop Tower, also known as rooftop telecom angular tower or rooftop base station, serves as a steel supporting structure designed for communication systems. These towers ...

Energy storage(KWH)

102.4kWh

Nominal voltage(Vdc)

512V

Outdoor All-in-one ESS cabinet



Communication site photovoltaic energy storage renovation ...

This project retrofits communication base stations with on-site photovoltaic energy storage, transforming traditional communication base stations into smart base stations powered by ...

What Is the Role of a Base Station in Wireless Communication?

Jun 27, 2025 · Base stations are the backbone of wireless communication networks, playing a pivotal role in signal transmission, network reliability, and high-speed data connectivity. As

...



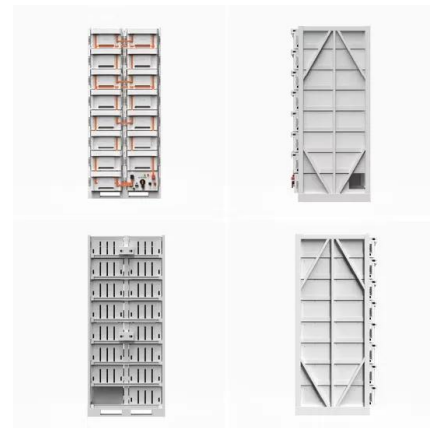
Rooftop Base Station , HuiJue Group E-Site

Have you ever wondered why your video call drops mid-sentence in crowded cities? Rooftop base stations are rewriting the rules of urban connectivity, yet 78% of telecom operators still

...

Solution for 1500V Inverter on Rooftop Appliance

Dec 27, 2022 · Intelligent communication box SCB3000. realize intelligent networking, not only can access the inverter of PV area, but also can access various third-party equipment such as ...



Contact Us

For catalog requests, pricing, or partnerships, please visit:
<https://www.chrisnell.co.za>