

Solar Storage Container Solutions

What are the components of outdoor power supply



Overview

Key components of a power supply include transformers, rectifiers, filters, voltage regulators, and protection circuits. What are the components of a power supply?

Key components of a power supply include transformers, rectifiers, filters, voltage regulators, and protection circuits. Understanding the functions and components of power supplies is crucial for designing and operating electronic systems effectively. What is a Power Supply?

.

What is the output of a power supply?

Figure 1. Block diagram for power supply components. Input is 117 volts ac. Processes used in a typical power supply are shown below the blocks. The output of the power supply can be dc or AC. The output of this supply is five volts dc.

What does a power supply do?

A power supply is an electronic device that converts incoming electrical energy from a source into the appropriate voltage, current, and frequency required to power electronic devices or components. What are the different types of power supplies?

.

What are the different types of power supplies?

Common types of power supplies include linear power supplies, switch-mode power supplies, uninterruptible power supplies (UPS), and programmable power supplies. What is the difference between AC and DC power supplies?

.

What are the safety features of a power supply?

Important safety features include overvoltage protection (OVP), overcurrent protection (OCP), short circuit protection (SCP), and thermal protection. These safeguards help protect both the power supply and the connected devices.

Can a power supply be used worldwide?

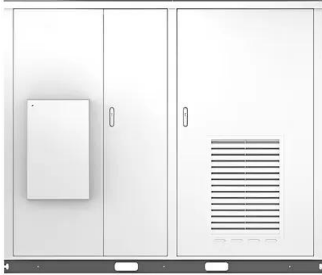
.

How do I choose a power supply?

Power Rating: Consider the overall power rating required by the system. This involves calculating the total power consumption of all components and selecting a power supply that can handle the load. **Efficiency:** Look for power supplies with high-efficiency ratings to minimize energy wastage and reduce operating costs.

What are the components of outdoor power supply

Solar

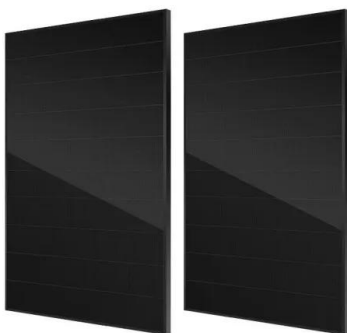


Electrical Substation: Equipment, Types, Components

An electrical substation is an integral part of a generation, transmission and distribution system. A substation can interrupt or establish electrical circuit, change the voltage, frequency or other ...

Take you to a quick and comprehensive understanding of

Feb 11, 2022 · Definition of outdoor power supply (name): an energy storage device that can output AC and DC, scientific name: portable AC and DC power supply. Common names: ...



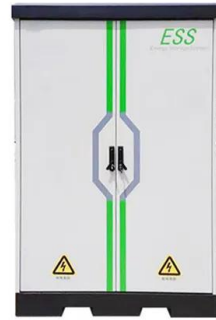
Everything You Need to Know About Outdoor Energy Storage Power Supply

Whether you are camping, working outdoors, or need a backup power source in remote areas, an outdoor energy storage power supply station system can help. This guide will explain what ...

Outdoor power supply Q& A: What does the outdoor power supply ...

Aug 19, 2024 · An outdoor power supply is a

portable device that can provide power for various electronic devices outdoors. It usually has a built-in lithium battery and has multiple output ...



What are the main features and components of an outdoor power

Jun 21, 2023 · An outdoor power distribution box, also known as an electrical distribution panel or an outdoor power enclosure, is a device used to distribute electrical power to various outdoor ...

Fundamentals of Modern Electrical Substations

Mar 16, 2023 · Part 1 of this course series is concentrated on demonstrating how modern power systems are arranged to accomplish all these goals; what place electrical substations have in ...



What are the outdoor energy storage power supplies?

Jun 12, 2024 · Outdoor energy storage power supplies refer to systems designed to store electrical energy generated from renewable sources, such as solar panels or wind turbines, for ...



Choosing the Perfect AC-DC 12V DC Power Supply for Outdoor ...

Aug 8, 2025 · The 12V DC power supply is one of the most common power outputs across various applications, especially in outdoor lighting, electric signage, automotive applications, ...

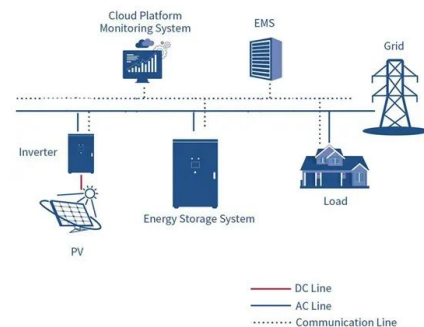


The Essential Parts of Air Conditioner Outdoor Unit Explained

Nov 17, 2022 · Discover the key components of an air conditioner outdoor unit, including the compressor, condenser, fan motor, expansion valve, and more. Learn how they work together ...

Components of a Power System (With Diagram) , Electrical Engineering

3 days ago · Major components of a power system are- synchronous generators, synchronising equipment, circuit breakers, isolators, earthing switches, bus-bars, transformers, transmission ...



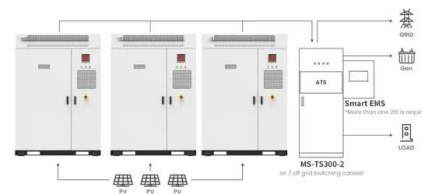
What are the main components and functions of ...

May 8, 2024 · Electrical box is a key device in the power system for receiving, distributing and controlling electrical energy. It is usually installed on the wall ...



What components are needed for outdoor power supply

Dec 20, 2023 · First of all, the outdoor power supply is an energy storage device, which definitely needs a battery; in addition, because it needs to output AC voltage, it needs the support of an ...



Application scenarios of energy storage battery products

Contact Us

For catalog requests, pricing, or partnerships, please visit:
<https://www.chrisnell.co.za>