

## Solar Storage Container Solutions

# Power tool lithium battery has low power storage



## Overview

---

How do you store a power tool battery?

Store the charger separately from the battery, at a temperature between 5°C and 40°C. Further information on the storage temperature for your power tool is available in the operating instructions. STIHL has been active in battery development for more than 10 years.

Are power tool batteries cross-compatible?

For all these safety and compliance considerations, batteries are not cross-compatible (unless specified by the power tool manufacturer). When buying aftermarket batteries for power tools, it is important to consult with the power tool owner's manual and purchase only the batteries recommended by the manufacturer.

Are lithium-ion batteries safe?

Lithium-ion batteries have become an integral part of our daily lives, powering everything from smartphones and laptops to electric vehicles. While they offer convenience and efficiency, concerns about safely storing lithium batteries in the house have also increased.

Is it safe to store lithium ion batteries in the House?

Yes, it is generally safe to store lithium-ion batteries in the house. However, take precautions such as avoiding extreme temperatures, preventing physical damage, and using fireproof containers for an added layer of safety. Can I store lithium batteries in cold temperatures during winter?

.

How do I store my power tool?

Store the power tool at low, frost-free temperatures. Avoid storage in direct sunlight and damp conditions. Further information on the storage temperature

for your power tool is available in the operating instructions. For safety, we recommend storing the activation key separately from the battery power tool.

How to store lithium ion batteries in winter?

**Adequate charge before storage:** Before storing lithium-ion batteries for the winter, ensure they are adequately charged (between 40% and 80%) to minimize the impact of self-discharge. **Avoid full charge (100%):** Keeping a battery fully charged during long storage can stress the cells and reduce their lifespan.

## Power tool lithium battery has low power storage

---

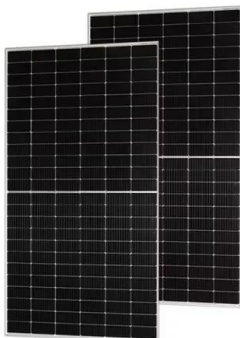


### Grid-Scale Battery Storage: Frequently Asked Questions

Jul 11, 2023 · What is grid-scale battery storage? Battery storage is a technology that enables power system operators and utilities to store energy for later use. A battery energy storage ...

### Power Tool Battery Charging: Do's, Don'ts & Pro ...

Apr 3, 2025 · Learn how to charge power tool batteries correctly + avoid common mistakes. Discover Ufine Battery's custom power solutions for longer-lasting ...



### How Long Power Tool Batteries Last and Factors That Affect ...

Feb 14, 2025 · Whether you're using lithium-ion, NiCd, or NiMH batteries, proper handling and storage are key to maximizing their potential. Invest in high-quality power tool batteries today ...

### Is It Safe to Store Lithium Batteries In the House?

Oct 2, 2024 · Proper storage of lithium-ion power tool batteries is essential for maintaining their longevity and ensuring they perform reliably when needed. ...



## Power Tool Batteries - Tools In Action - Power Tool Reviews

Lithium-Ion: The Standard Today Most modern cordless tools use lithium-ion (Li-ion) batteries. Here's why they dominate the market: High Energy Density: More power in a smaller, lighter ...

...

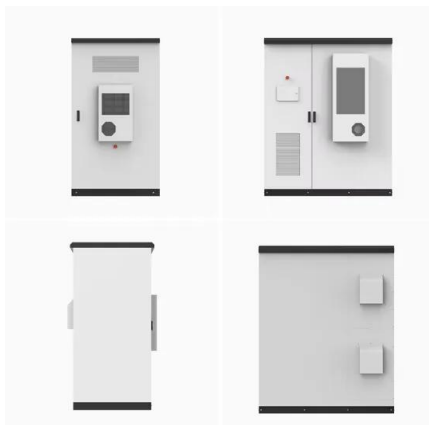
## Power Tool Batteries - Tools In Action - Power Tool Reviews

Most modern cordless tools use lithium-ion (Li-ion) batteries. Here's why they dominate the market: High Energy Density: More power in a smaller, lighter package. Low Self-Discharge: ...



## Is it OK to store power tool batteries in the ...

Jan 17, 2024 · Storing power tool batteries in the garage is generally acceptable, but specific conditions must be met. Batteries should be kept in a cool, dry ...



## How to store lithium batteries , A simple guideline , STIHL

Nov 18, 2024 · A power tool with an integrated battery, such as the FSA 45, needs to be treated differently from other battery tools as you cannot remove the battery for storage purposes.



## Advancing energy storage: The future trajectory of lithium-ion battery

Jun 1, 2025 · The energy density of lithium-ion batteries, typically ranging from 150 to 250 Wh/kg, allows for efficient energy storage in confined maritime spaces while delivering the necessary ...

## Optimal Lithium Battery Charging: A Definitive ...

Mar 12, 2024 · Unlock the secrets of charging lithium battery packs correctly for optimal performance and longevity. Expert tips and techniques revealed in our ...



## Temperature Fluctuations Affect Power Tool Battery Storage

Oct 28, 2024 · Temperature fluctuations can significantly impact power tool battery storage. Batteries should be stored in a stable environment, ideally between 32°F and 77°F (0°C to ...

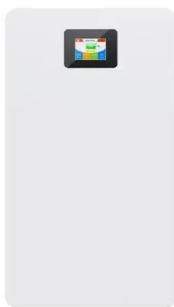
## A guide to proper lithium-ion battery storage

Aug 24, 2023 · When is the best time to charge the integrated lithium-ion battery again? If you are using your cordless power tool with integrated battery after a ...



## Storing Lithium-Ion Batteries Properly , STIHL AU ...

May 7, 2025 · STIHL batteries rely on lithium-ion cells and feature exceptionally low self-discharge rates of just 1-3% per year of storage. In addition, all STIHL ...



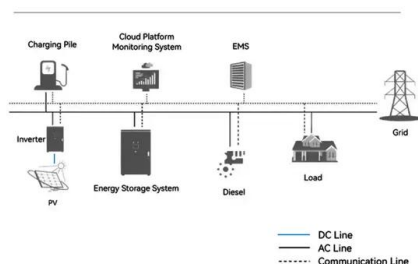
## How To Choose A Power Tool Battery?

Aug 4, 2025 · There are many types of power tool batteries, with lithium-ion (Li-ion) batteries being the most common because of their high energy density, long life and light weight. They ...

- LiFePO<sub>4</sub>, Battery,safety
- Wide temperature: -20~55℃
- Modular design, easy to expand
- The heating function is optional
- Intelligent BMS
- Cycle Life: > 6000
- Warranty: 10 years



### System Topology



## A guide to proper lithium-ion battery storage

Apr 6, 2025 · When is the best time to charge the integrated lithium-ion battery again? If you are using your cordless power tool with integrated battery after a ...

## How Long Do Lithium-Ion Power Tool Batteries Typically Last?

18 hours ago · For instance, DeWalt Lithium-ion power tool batteries last for 300 to 500 charge cycles. If you don't typically fully discharge and fully charge them, they're good for roughly two

...



LiFePO <sub>4</sub>
Wide temp: -20°C to 55°C
Easy to expand
Floor mount&wall mount
Intelligent BMS
Cycle Life:≥6000
Warranty :10 years



## General Lithium Ion Battery Safety

Use and store your battery within the temperature limits stated by the manufacturer. Do not store in a closed location where sunlight may cause elevated temperatures, such as near a window ...

## Contact Us

For catalog requests, pricing, or partnerships, please visit:  
<https://www.chrisnell.co.za>