

Solar Storage Container Solutions

PLC uninterruptible power supply capacity



Overview

- Electrical codes typically do not allow plug-in connections within a control panel.
- Provides remote monitoring and configuration through included software .
- Meet code requirements to allow proper shutdown of the UPS when control panel is open and closed and provide for remote monitoring and control of UPS.

The size of the UPS depends on various factors, including the number of connected transmitters, power consumption of instruments, and the quantity and type of PLC cards. How do I calculate the capacity of an uninterruptible power supply (UPS)?

Calculating the capacity of an Uninterruptible Power Supply (UPS) involves multiple considerations, including load power, backup time, efficiency, and load characteristics. This guide provides a detailed breakdown to help you select the right UPS for your needs. Start by calculating the total power requirements of all connected devices.

What is an uninterruptible power supply (UPS)?

Uninterruptible power supplies are far more present in industrial automation systems than many realize. Any control panel with a well-designed power protection framework will include an uninterruptible power supply (UPS) as its key component.

Which control panel has an uninterruptible power supply (UPS)?

Any control panel with a well-designed power protection framework will include an uninterruptible power supply (UPS) as its key component. Server rooms, industrial PCs, mobile applications (stacker cranes, AMR's), and others may also include a UPS.

What is a PLC power supply?

The power supply in a PLC system converts high-voltage alternating current

(AC), commonly 120V or 240V AC, into a stable, lower-voltage direct current (DC), typically 24V DC, that the PLC and its components require to operate.

Should you use uninterruptible power supplies (UPS) as a countermeasure?

In particular, in places such as factories and data centers where an interruption in the power supply can have a significant impact, it is necessary to use Uninterruptible Power Supplies (UPS) as a countermeasure. However, risk management in the unlikely event that the UPS itself fails can be a blind spot.

Can a PLC power supply power a field device?

The PLC power supply unit powers only the CPU and communication modules. Sensors, actuators, and other field devices require separate power sources. Field devices may use 24V DC, 48V DC, or even 120V AC, depending on the application. To ensure proper operation, always verify the power supply specifications for both PLC and field devices.

PLC uninterruptible power supply capacity

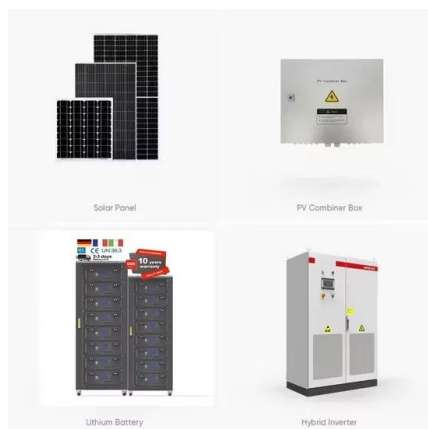


10 kVA - 120 kVA Threephase Online UPS Uninterruptible Power Supply

Aug 13, 2025 · 10 kVA - 120 kVA Three-Phase Online UPS Three-phase Online UPS with 10 kVA - 120 kVA capacity are professional power solutions designed for the critical energy needs of ...

UPS sizing for Control Systems: Key Considerations for ...

When it comes to control systems, choosing the right Uninterruptible Power Supply (UPS) is crucial for ensuring uninterrupted operation and safeguarding sensitive equipment. The size of ...



What Is UPS in PLC?

Jan 13, 2024 · Programmable Logic Controllers (PLCs) play a crucial role in industrial automation, managing and controlling manufacturing processes with precision. To ensure the uninterrupted ...

Manual Uninterruptible Power Supply (Capacitive)

Dec 9, 2024 · The CU8110-0120 is a capacitive uninterruptible power supply (UPS) based on

double-layer capacitors (EDLC) with a maximum energy of 0.9 Wh and a maximum power ...



How to Size an Industrial UPS System for PLC Backup ...

Jun 26, 2025 · To size an industrial UPS system for PLC (Programmable Logic Controller) backup applications, follow these concrete steps: 1. Determine Load Requirements. a. List All Devices. ...



Siemens 6ep1935-6MD11 PLC Uninterruptible Power Supply UPS ...

Jun 13, 2025 · The Siemens 6EP1935-6MD11 PLC Uninterruptible Power Supply (UPS) Systems are designed to provide reliable power protection for industrial automation and control systems.



Bulletin 1609 Next Generation Industrial UPS

Sep 26, 2017 · Features and Benefits The 1609 family of Industrial Uninterruptible Power Supplies is designed for industrial applications - with features required for remote control and operation ...

????? (UPS) ?????:??????????????

Mar 20, 2024 · ????? (UPS) ?????:????????????????????
 - ?????????????????????(?? 2033 ?) Uninterruptible
 Power Supply (UPS) Market Size- ...



SANTAK PLC controlling sYstem uninterruptible power supply ...

High reliability architecture: Output transformer vacuum impregnation treatment, redundant power supply and fan, passed 100% factory aging test. Isolation transformer standard configuration: ...

How to calculate the required ups load capacity?

Oct 19, 2023 · That is to say, one only runs the uninterruptible power supply system around 80% of the capacity to support the load calculated. For example, if the total required capacity/load is ...



Contact Us

For catalog requests, pricing, or partnerships, please visit:
<https://www.chrisnell.co.za>