

Solar Storage Container Solutions

Lightning protection and grounding construction of communication base station batteries



Overview

Recommendation ITU-T K.112 provides a set of practical procedures related to the lightning protection, earthing and bonding of radio base stations (RBSs). How should a lightning protection System (RBS) be formed?

The earthing network of an RBS should be formed by a ring loop surrounding the tower, equipment room and fence, at a minimum. The mean radius r_e of this ring loop should be not less than l_1 , as indicated in Figure 1 and this value depends on the lightning protection system (LPS) class and on the soil resistivity.

What is a radio base station (RBS) earthing network?

The most important objective of the radio base station (RBS) earthing network is to minimize the differences in potential between the conductive parts within the RBS site (equipotential bonding), which is beneficial for the safety, lightning protection and electromagnetic compatibility (EMC) performance of the equipment.

What is a lightning protection system (LPS)?

3.2.3 lightning protection system (LPS): Complete system used to reduce physical damage due to lightning flashes to a structure. NOTE – An LPS consists of both external and internal lightning protection system.

Is a telecommunication tower impacted by lightning?

If the antenna is installed on the top of telecommunication tower, e.g., antenna positions 1 of Figure 29, it is considered to be impacted by or exposed to direct lightning strikes. Refer to [IEC 62305-3] for detail information about the protection angles and volume protected by an air termination system.

Are rooftop antennas protected from lightning strikes?

If the antenna is installed on the rooftop, e.g., antenna positions 2 of Figure

29, depending on the relative height of building and the installation of the antenna system, it may be considered to be inherently protected from direct lightning strikes or be impacted by or exposed to direct lightning strikes.

Can a navigation light monitoring unit be installed in a PDB?

Refer to [IEC 61643-12] for the relevant information. If the NL is directly powered by PDB in the equipment room, an SPD should be integrated into the PDB. The bonding conductor of the PDB is recommended to be shorter than 1 m. The protection module of the navigation light monitoring unit can be installed in the NLCB or in the PDB.

Lightning protection and grounding construction of communication

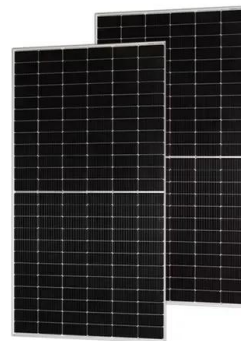


Lightning Protection Grounding System of Communication Base Station

A lightning protection grounding, communication base station technology, applied in the direction of connecting contact materials, towers, building types, etc., can solve problems such as high ...

Communication Base Station (Independent Station) Lightning Protection

"Wireless communication base station lightning intrusion channel isolation protection technology" in the practical application of the project, the use of "simple network" with Shenzhen ...



The Station Ground System

Jul 2, 2010 · The station electrical, and to a lesser extent the RF, grounding system provide protection against hazards from equipment and lightning in the shack. However, the use of ...

Electrical Grounding For Telecommunications Systems

Improve the protection and operation of your communications facilities and minimize the

hazards to your personnel. This course will address electrical and mechanical grounding in central ...



Study on critical lightning protection and grounding ...

Oct 18, 2014 · The text has proposed a theoretic innovative technology in which the grounding network is taken as the basis, while the protection to main lightning introduction ports, ...

ITU-T Rec. K.112 (07/2019) Lightning protection, ...

Recommendation ITU-T K.112 provides a set of practical procedures related to the lightning protection, earthing and bonding of radio base stations (RBSs). It considers two types of RBS: ...



A complete 5G mobile base station power lightning protection ...

It generally includes the following four aspects: lightning protection of AC power cables, grounding connection between base station grounding network and station equipment, lightning ...

??????????????

May 23, 2022 · Finally, based on the lightning protection characteristics of tower and base station equipment, a typical technical scheme of shared tower is proposed, which can meet the ...



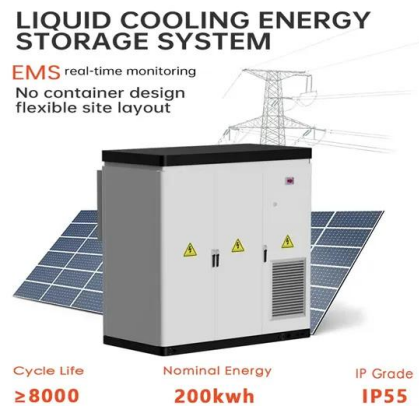
Communication Base Station Lightning Arrestor , Huijue ...

The communication base station lightning arrester remains the frontline defense against nature's voltage spikes, yet industry reports show 23% of telecom operators still use decade-old ...



Analysis of Lightning Protection and Grounding Effect of

Aug 26, 2020 · By analyzing the lightning protection and grounding requirements of the respective systems of the communication base station and the power tower, the impact of the towers on ...



Lightning protection, earthing and bonding: Practical ...

May 1, 2021 · This Recommendation addresses the practical procedures concerning the lightning protection, earthing and bonding of radio base station (RBS) sites. The purpose of this ...

Communication Base Station (Independent Station) Lightning Protection

For a long time, the protection work of the communication base station (independent station) has separated the lightning protection and grounding engineering and completed it by different ...

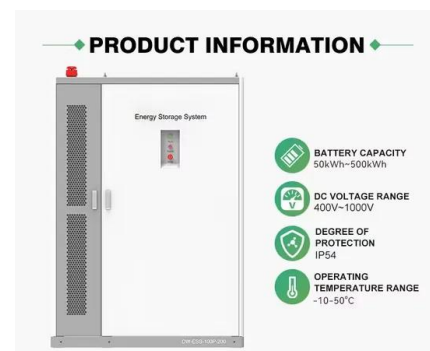


Lightning protection, earthing and bonding: Practical ...

May 1, 2021 · scope: This Recommendation addresses the practical procedures concerning the lightning protection, earthing and bonding of radio base station (RBS) sites. The purpose of ...

Specification Lightning Protection Systems

Jan 22, 2025 · Summary This Section specifies the lightning protection system for the building(s) or structure(s). This system provides safety for the building and occupants by preventing ...



(PDF) Analysis of Lightning Protection and Grounding Effect ...

Aug 26, 2020 · By analyzing the lightning protection and grounding requirements of the respective systems of the communication base station and the power tower, the impact of the towers on ...

Post-earthquake functional state assessment of communication base

Dec 1, 2024 · There is a lack of models that can fully evaluate the post-earthquake functional states of base stations with the consideration of the dependencies between different ...



lightning protection and grounding of energy storage station

research on lightning protection and grounding safety evaluation of base station ... Building 5g base station on power tower is an effective way to realize resource integration and save ...

Common Bonding of Grounded Systems

Dec 20, 2022 · 4.14.3 This interconnection shall include all building grounding electrode systems including lightning protection, electric service, communication, and antenna system grounding ...



On Lightning Protection and Grounding Work of Wireless Communication

In the frequent thunderstorm season, lightning protection has become an important task of wireless communication stations. It is of great significance to do a good job of system ...

Principle and engineering design of lightning protection for ...

Starting from the generation of lightning strikes, this article briefly introduces the main ways in which base stations are introduced into lightning damage, focuses on discussing the main ...



Contact Us

For catalog requests, pricing, or partnerships, please visit:
<https://www.chrisnell.co.za>