

Solar Storage Container Solutions

Layout of photovoltaic inverter and combiner box bridge



Overview

What is an AC combiner box for PV inverter?

An AC combiner box is used to connect multiple grid-connected inverters to a single power cabinet. It provides lightning protection and circuit breakers for each inverter output, ensuring safe and convenient access to the power cabinet.

What is a grid tied inverter?

Grid-tied inverters feed power into the grid as AC current at the same frequency as the grid voltage. An “island” (aka, “islanding”) condition can occur due to a fault condition within the grid or when the grid shows a resonant-load behavior.

How often does the inverter disconnect from the grid?

The inverter disconnects from the grid depending upon the level and duration of leakage current detected. As a further safety precaution, in compliance with UL1741 CRD 2010*, the inverter conducts an isolation monitor interrupter self-test before connecting to the grid or every 24 hours, whichever is sooner.

How does an inverter induce a frequency variation?

The inverter “induces” a frequency variation by injecting capacitive reactive power into the grid periodically. The time period during which the reactive power is fed into the grid depends on the required detection time (grid standard).

How does an inverter check for a ground fault?

Any time the inverter is connected to the grid, the inverter circuitry continuously checks for ground fault conditions using a differential measurement of the AC phase (2W or 3W) lines searching for any values that would indicate leakage of current to ground.

Layout of photovoltaic inverter and combiner box bridge



How to Connect Solar Panels to a Combiner Box: A Step-by ...

Jan 10, 2025 · Connecting solar panels to a combiner box is a crucial step in setting up a solar power system. This process consolidates multiple strings of solar panels into a single output, ...

Photovoltaic combiner box communication topology ...

Jan 26, 2021 · In a photovoltaic system, a combiner box acts as a central hub that consolidates and manages the direct current (DC) output of multiple solar panels. Its main purpose is to simplify ...



An Introduction to Inverters for Photovoltaic ...

Jun 3, 2020 · An Introduction to Inverters for Photovoltaic (PV) Applications This article introduces the architecture and types of inverters used in photovoltaic ...

What Is a Combiner Box as Used in PV System

Jun 9, 2025 · Positioned between the solar panels and the inverter, it simplifies system design and protects the electrical connections. By combining the DC inputs from several photovoltaic ...



Photovoltaic combiner box meter installation diagram

What is a PV combiner box wiring diagram? Overall, a PV combiner box wiring diagram is a valuable tool in the installation and maintenance of a solar energy system. It provides a clear ...



How does a Solar Combiner Box work

May 29, 2025 · The combiner box is designed to handle the high voltages and currents produced by solar panels. For instance, many systems operate with a maximum photovoltaic (PV) array ...



...

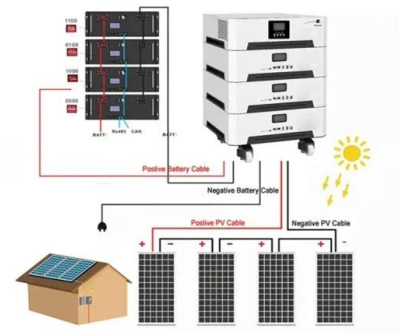


PV AC Combiner Boxes , PV Distribution Box Supplier , IPKIS

May 26, 2025 · IPKIS presents PV AC combiner boxes, positioned between string inverters and AC output, consolidates currents, enhancing system safety for personnel.

Professional Solar PV Combiner Box Solutions

A PV combiner box combines multiple strings of solar panels into one main output circuit. It's essential for any solar installation with multiple strings as it provides overcurrent protection, ...



ESS



Photovoltaic combiner box wiring diagram

Oct 24, 2021 · What is a PV combiner box wiring diagram? Overall, a PV combiner box wiring diagram is a valuable tool in the installation and maintenance of a solar energy system. It ...

Placement Considerations for Solar Combiner Boxes in Photovoltaic

By considering factors such as proximity to PV arrays, accessibility, environmental protection, code compliance, integration with other components, wiring routes, and future expansion, ...



Combiner box connection for centralized string inverters

Adding capacity in photovoltaic plants is a core part of the energy transition. Investment in PV plants therefore needs to be made as attractive as possible for operators. In order to make the ...

APPLICATION NOTE DC COMBINER BOX IN ...

Jul 25, 2025 · External DC combiner boxes are used with central inverters in large-scale solar farms to consolidate thousands of strings and with single-mpp string inverters which can be ...



Common Faults and Working Characteristics of ...

May 6, 2025 · A solar power plant combiner box plays a crucial role in managing the electrical output from solar panels and ensuring efficient power transfer to ...

Contact Us

For catalog requests, pricing, or partnerships, please visit:
<https://www.chrisnell.co.za>