

## Solar Storage Container Solutions

# Huawei s 5g base station power consumption lags behind



## Overview

---

How much power does a 5G station use?

The power consumption of a single 5G station is 2.5 to 3.5 times higher than that of a single 4G station. The main factor behind this increase in 5G power consumption is the high power usage of the active antenna unit (AAU). Under a full workload, a single station uses nearly 3700W.

Why does 5G use more power than 4G?

The data here all comes from operators on the front lines, and we can draw the following valuable conclusions: The power consumption of a single 5G station is 2.5 to 3.5 times higher than that of a single 4G station. The main factor behind this increase in 5G power consumption is the high power usage of the active antenna unit (AAU).

How does mobile data traffic affect the energy consumption of 5G base stations?

The explosive growth of mobile data traffic has resulted in a significant increase in the energy consumption of 5G base stations (BSs).

Why are 5G base stations being powered off every day?

Selected 5G base stations in China are being powered off every day from 21:00 to next day 9:00 to reduce energy consumption and lower electricity bills. 5G base stations are truly large consumers of energy such that electricity bills have become one of the biggest costs for 5G network operators.

How to increase 5G signal strength?

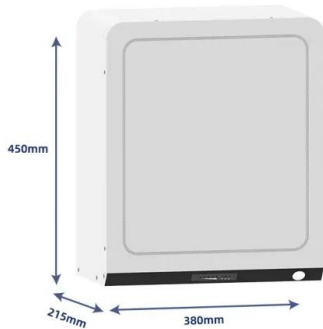
In order to ensure the signal strength, the power must be increased. In order not to be blocked by walls, many base stations must be densely placed in the cell to avoid being blocked by too many walls. If you want to enjoy the high speed of the 5G era, you have to increase the number of base stations more than ten times or even hundreds of times.

What is 5G base station?

1. Introduction 5G base station (BS), as an important electrical load, has been growing rapidly in the number and density to cope with the exponential growth of mobile data traffic . It is predicted that by 2025, there will be about 13.1 million BSs in the world, and the BS energy consumption will reach 200 billion kWh .

## Huawei s 5g base station power consumption lags behind

---



### 5G Network Architectures and Technologies

Aug 1, 2025 · In NSA networking, 5G base stations cannot be deployed independently, requiring LTE base stations to be used as anchor points on the control plane for access to the core ...

### 5G network deployment and the associated energy consumption ...

Jul 1, 2022 · In particular, this research took the UK as an example to investigate the spatiotemporal dynamic characteristics of 5G evolution, and further analysed the energy ...



### Energy consumption optimization of 5G base stations ...

Aug 1, 2023 · 5G base station (BS), as an important electrical load, has been growing rapidly in the number and density to cope with the exponential growth of mobile data traffic [1]. It is ...

### Huawei Releases 5G Series Products to Expand ...

Jun 28, 2021 · At the 2021 Mobile World Congress (MWC 2021) in Barcelona, Huawei

launched a series of 5G products and solutions oriented to "1+N" 5G ...



## DBS5900 Distributed Base Stations -- Huawei Enterprise

Aug 2, 2025 · The DBS5900 adopts a modular structure, with the baseband unit BBU and remote radio unit RRU deployed separately. The DBS5900 has the characteristics of small size, low ...



## Front Line Data Study about 5G Power Consumption , You

...

The two figures above show the actual power consumption test results of 5G base stations from different manufacturers, ZTE and HUAWEI, in Guangzhou and Shenzhen, by an anonymous

...



## Huawei's "ONE 5G" Concept Centre Stage at Global MBB ...

Centre-stage at the event, therefore, was Huawei's "ONE 5G" concept - a set of base station solutions designed to integrate legacy base station hardware into single RAN units and

...



## Analysis and mitigation of power consumption in a ...

The primary objective of this study is to propose an optimization framework that reduces power consumption in Massive MIMO systems, thereby enabling sustainable and energy-efficient 5G ...



Support Customized Product

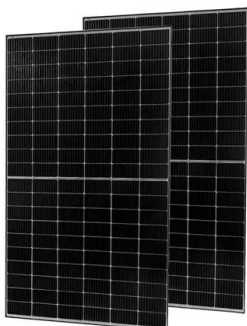


## Modelling the 5G Energy Consumption using Real-world ...

Jun 26, 2024 · This paper proposes a novel 5G base stations energy consumption modelling method by learning from a real-world dataset used in the ITU 5G Base Station Energy ...

## Front Line Data Study about 5G Power Consumption

The power consumption of a single 5G station is 2.5 to 3.5 times higher than that of a single 4G station. The main factor behind this increase in 5G power consumption is the high power ...



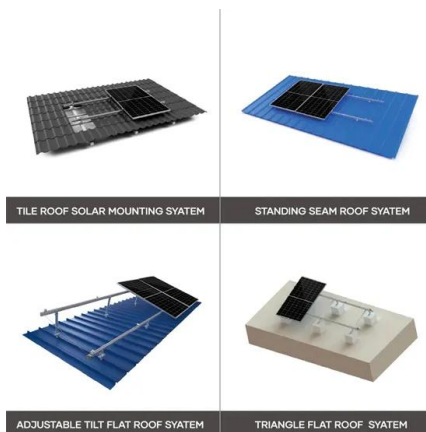
## Huawei iSitePower Intelligent Peak Staggering Practice at ...

Jan 7, 2025 · After 5G is deployed, the power consumption and number of base stations increase significantly, and so does the carrier operational expenditure (OPEX). China Tower Zhejiang ...

## Machine Learning and Analytical Power Consumption

...

Jan 23, 2023 · Abstract--The energy consumption of the fifth generation (5G) of mobile networks is one of the major concerns of the telecom industry. However, there is not currently an ...



## Power consumption based on 5G communication

Oct 17, 2021 · At present, 5G mobile traffic base stations in energy consumption accounted for 60% ~ 80%, compared with 4G energy consumption increased three times. In the future, high ...

## Contact Us

For catalog requests, pricing, or partnerships, please visit:  
<https://www.chrisnell.co.za>