

Solar Storage Container Solutions

Huawei home inverter usage scenarios



Overview

What is the difference between Huawei fusion solar and conventional fusionsolar?

Conventional solutions require different products for different scenarios. In contrast, Huawei's FusionSolar one-fits-all solution uses one inverter for both on-grid and off-grid scenarios, one optimizer for the different modules on the market (166/182/210), one ESS for 1-/3-phase inverters, and one app for all functions.

Should you choose Huawei fusion solar residential?

From now, customers who choose Huawei FusionSolar Residential only need to make a single call, regardless of which component may have failed, and Huawei FusionSolar will look after them. The one-fits-all solution is an easy choice when it comes to residential PV.

How many inverters can be connected to a smart dongle?

- The Smart Dongle must be connected to the master inverter.
- It connects to the management system and performs power scheduling. Ethernet 6KTL)-L1. In the Smart Dongle networking scenario, a maximum of three inverters and six ESSs can be connected.

1. The information in this document is subject to change without notice.

Why is Huawei fusionsolar a 'one-fits-all' solution?

For this reason, Huawei FusionSolar has launched its 'one-fits-all' solution, which incorporates optimizer, inverter, energy storage system (ESS), charger and management system, underlining the company philosophy of: One supplier for all products, one solution for all scenarios and one service window for all customers.

What is PV power utilization priority?

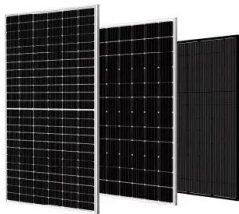
PV power utilization priority: Self-consumption > Export to grid > ESS charge

Load is supplied with power in the priority of PV, ESS discharge and Grid. ESS charge power to grid is prohibited. PV power utilization priority: Self-consumption > ESS charge > Export to grid Load is supplied with power in the priority of PV, ESS discharge and Grid.

How many ESS can be connected to a Master inverter?

- If there is only one ESS, it must be connected to the master inverter. connect to a maximum of one ESS. (including optimizers) Master inverter Sensor to the same inverter in a parallel system. 14, 21)-S1 cannot connect to different inverters. Backup Box Backup Box-B0 inverter. connected to the Backup Box.

Huawei home inverter usage scenarios



Huawei FusionSolar 'One-Fits-All' solution ...

Apr 11, 2023 · In contrast, Huawei's FusionSolar one-fits-all solution uses one inverter for both on-grid and off-grid scenarios, one optimizer for the different ...

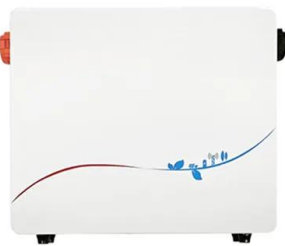
Residential Smart PV Solution Quick Guide (Three-Phase PV+ESS Scenario)

Jul 26, 2025 · SmartGuard SmartGuard-63A-T0 Works with the inverter, ESS, grid, and home appliances to achieve smart SmartGuard-63A-AUTO management on home power ...



Unlocking the Benefits of Huawei Solar Inverters for Efficient ...

Jan 10, 2025 · Understanding Huawei's solar inverters is crucial for anyone interested in harnessing solar energy efficiently and effectively. This guide will delve into the features, ...



Residential Smart PV Solution Quick Guide (Single-Phase PV+ESS Scenario)

Jul 26, 2025 · (Single-Phase PV+ESS Scenario + SmartGuard Networking) 3 Cable Connections (Single-Phase Inverter L1 + ESS S1 + SmartGuard) PV strings (including optimizers) Before ...



Solar Inverter Essentials: Types & Selection Guide

May 28, 2024 · Discover the vital role of a solar inverter in transforming solar energy into usable power for homes and businesses. Learn about the different ...

Huawei Webinar Welcome for PPT

Oct 15, 2020 · High voltage DC coupled battery plug & play integration to inverter. Battery is managed by inverter via RS485 communication. Support 5KW battery charging while 5KW AC ...



Huawei photovoltaic inverter configuration plan

Huawei's smart string inverter SUN5000 series combines inverters and optimizers for a 30% higher yield and 30% more installation area. The system offers AFCI intelligent arc protection, ...

FusionSolar Residential Smart PV Solution Brochure 2025 for ...

...

Jun 12, 2025 · lower time costs One optimizer for all One inverter for on-grid One ESS for single-phase One app for all functions types of modules and off-grid scenarios and 3-phase inverters ...



LUNA2000-215 Serie FAQ , Solar Inverter Smart

The 2s backflow prevention function (also named as zero power grid-tied feature) mainly applies to self-use scenarios. The SmartLogger detects the active power of meters at grid-tied points ...

Advancing into a new era of zero-carbon living with Huawei...

Mar 27, 2024 · Through the Home Energy Management Assistant EMMA, Huawei pioneers the application of smart technology in home green power, achieving integrated intelligent ...



Application of Huawei photovoltaic inverter

Apr 21, 2021 · string inverter SUN5000-17-25K-MB0 online. Take a quick look at Huawei solar inverter models, conversion efficiency, y efficiency with a grid-tied solar system. Understand its ...

Questions Related to C& I ESS Performance

The 2s backflow prevention function (also named as zero power grid-tied feature) mainly applies to self-use scenarios. The SmartLogger detects the active power of meters at grid-tied points ...

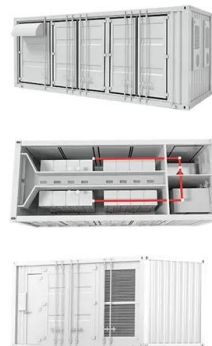


Residential Smart PV Solution Quick Guide (Single-Phase PV+ESS Scenario)

Jul 31, 2025 · (Single-Phase PV+ESS Scenario + Smart Dongle Networking) 3 Cable Connections (Single-Phase Inverter LC0/L1 Cascading) The following figure shows the signal cable ...

TOU (Time of Use) Mode

Apr 25, 2025 · TOU (Time of Use) Mode In the daytime, the surplus PV power can be sold to the grid or used to charge batteries. At night, batteries are charged from the grid when the ...



Contact Us

For catalog requests, pricing, or partnerships, please visit:
<https://www.chrisnell.co.za>