

Solar Storage Container Solutions

How to test the battery of base station power supply



Overview

What is a battery capacity test?

Annual capacity test that measures the capacity of the battery in Ampere hours. The battery should be replaced if its capacity is less than 80% of the rated capacity. 3. General maintenance - measuring of the electrolyte level and the specific gravity. Let's consider each of them in detail. By this test we can ensure that:.

What are the different types of battery test?

There are three types of tests: 1. Daily on load/off load test, which ensures that all connections are intact and the voltage on loaded batteries do not drop too quickly. 2. Annual capacity test that measures the capacity of the battery in Ampere hours. The battery should be replaced if its capacity is less than 80% of the rated capacity. 3.

What is battery testing?

Battery testing comprises measuring the voltage, capacity, & other parameters of the battery with the help of a multimeter or another equipment. You will be able to tell whether a battery is defective, weak, or needs to be changed based on the results of the tests performed on the battery. What is the purpose of Battery Testing?

.

How do you test a battery?

Battery testing in accordance with multiple standards, including IEC 62619. The initial stage is a visual inspection. Check the cell (or) battery. Examine it for signs of damage, such as leaks, cracks, rust, or swelling. You may also need to smell the rechargeable battery. A leaky cell usually smells appealing.

How long should a battery last after a capacity test?

After the capacity test, the measurement of the time a battery charges up to 100% should be done. Under SOLAS requirements this time should be less than 10 hours. The onboard batteries require no great maintenance. Just 2 parameters should be checked: the electrolyte level and the specific gravity of the electrolyte.

How to test GMDSS battery?

1. Disconnect the GMDSS station from the AC power supply by pressing the on/off button on the GMDSS panel (or in the radio room). Switch off all other power sources that charge the battery, if any. If the battery is being continuously charged, we will see no voltage drop. But by means of this test we intend to determine exactly the voltage drop.

How to test the battery of base station power supply



How to Maintain Backup Power Supply for Telecommunications Base Stations?

Battery Maintenance: If the backup power system includes batteries, perform regular maintenance tasks such as checking electrolyte levels (for flooded lead-acid batteries), cleaning terminals, ...

Maintenance of communication base station power supply ...

This article discusses how to improve the power supply safety of the power supply system of communication base stations, reduce the failure rate of the power supply system of ...



Communication base station battery maintenance equipment

Mar 12, 2019 · The recording and processing requirements of the base station battery test data, the accumulation of these data, can create a complete battery file, providing a credible basis ...

Testing and Checking of GMDSS Batteries Required by SOLAS

Nov 7, 2023 · During the commissioning phase, this checklist provides a safe, consistent method for the initial inspection, checkout, testing, & data ...



Maintaining connectivity with load-bank tested backup batteries

Apr 12, 2024 · A load bank is a piece of electrical test equipment capable of testing power sources by simulating loads. Frequently used to check generator performance, load banks can also ...

Base Station Components , Radio Comms Warehouse

The NOVA range of power supplies is the most extensive by far. Each unit has been developed over the years incorporating value added features such as metering and adjustable voltage. ...



- ✓ LIQUID/AIR COOLING
- ✓ INTELLIGENT INTEGRATION
- ✓ PROTECTION IP54/IP55
- ✓ BATTERY /6000 CYCLES



How to Troubleshoot the Power Supply Unit (PSU) of a Dell ...

Jul 24, 2025 · Learn how to identify if the power supply unit of a Dell desktop is working. Find steps to troubleshoot issues with power supply units and running a self-test diagnostic on the ...

Backup Battery Analysis and Allocation against Power ...

Jun 1, 2018 · Through exploiting the correlations between the battery working conditions and battery statuses, we build up a deep learning based model to estimate the remaining lifetime ...



Base Station Power Supply , Huijue Group E-Site

The Silent Backbone of Modern Connectivity
Have you ever wondered what keeps your 5G signals flowing during a storm? Behind every seamless video call lies a base station power ...

Main Causes of Shortened Battery Lifespan in Base Stations

Battery packs are a crucial part of the base station's DC uninterruptible power supply, with investments comparable to those in switch power supply equipment. Most mobile base ...

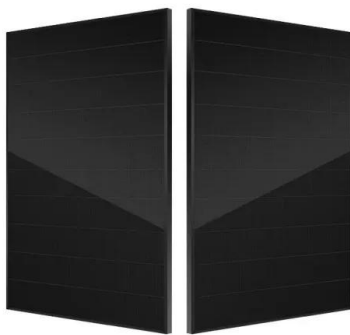


Mobile base station site as a virtual power plant for grid ...

Mar 1, 2025 · Furthermore, it seeks to determine if the full activation time can meet the requirements of an FFR product. The system consists of a live mobile base station site with a ...

Daily maintenance and management of base station power supply ...

This post was last edited by jameswangsynnex on 2015-3-3 20:00 Batteries are an important part of the base station power system. The stability of their operation is directly related to the ...



Base station battery discharge test method

Notable discharge testing methods include load bank testing, capacity testing, partial discharge, and charge/discharge cycle testing. The first one is load bank testing. It is the most comprehensive ...

Maintenance Points for Telecom Base Station Batteries

(8) Battery capacity testing and discharge testing should be performed regularly. (1) A verification discharge test should be done every year, discharging 30% to 40% of the rated capacity. (2) It ...

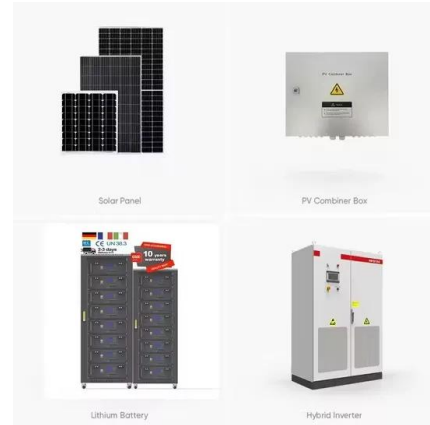


Base station battery charging and discharging test

Among all the tests, the discharge test (also known as load test or capacity test) is the only test that can accurately measure the true capacity of a battery system and in turn determine the ...

Optimal configuration of 5G base station energy storage ...

Feb 1, 2022 · The high-energy consumption and high construction density of 5G base stations have greatly increased the demand for backup energy storage batteries. To maximize overall ...



What is the purpose of batteries at telecom base ...

Feb 10, 2025 · Among the many types of batteries, why can lead-acid batteries become the first choice for telecom base stations? This is mainly due to its ...

Power Supply Testing , Keysight

Mar 1, 2024 · Power Supply Testing As regulated-power supply technology evolves, testing methods for design verification and product function require more sophisticated electronic ...



Contact Us

For catalog requests, pricing, or partnerships, please visit:
<https://www.chrisnell.co.za>