

Solar Storage Container Solutions

How many inverter output voltages are there



Overview

Specifications provide the values of operating parameters for a given inverter. Common specifications are discussed below. Some or all of the specifications usually appear on the inverter data sheet. Maximum AC output power This is the maximum power the inverter can supply to a load on a.

Determine the power that a solar module array must provide to achieve maximum power from the SPR-3300x inverter specified in the datasheet in Figure 1. Solution.

Inverters can be classed according to their power output. The following information is not set in stone, but it gives you an idea of the classifications and general.

What is the input voltage of an inverter?

Understanding the inverter voltage is crucial for selecting the right equipment for your power system. Inverter voltage typically falls into three main categories: 12V, 24V, and 48V. These values signify the nominal direct current (DC) input voltage required for the inverter to function optimally. What is the rated input voltage of an inverter?

.

What is an example of a power inverter?

Common examples are refrigerators, air-conditioning units, and pumps. AC output voltage This value indicates to which utility voltages the inverter can connect. For inverters designed for residential use, the output voltage is 120 V or 240 V at 60 Hz for North America. It is 230 V at 50 Hz for many other countries.

What voltage is a 12V inverter?

Inverters come in various configurations, each designed for specific power systems. Common rated input voltages include 12V, 24V, and 48V. The choice depends on the application, the size of the power system, and the available power source. A 12V inverter is commonly used for smaller applications, such

as in vehicles or small off-grid setups.

How much power does an inverter need?

It's important to note what this means: In order for an inverter to put out the rated amount of power, it will need to have a power input that exceeds the output. For example, an inverter with a rated output power of 5,000 W and a peak efficiency of 95% requires an input power of 5,263 W to operate at full power.

What voltage is used for inverter?

Small input voltages like 12V, 24V, 48V DC are used for inverters used in running small applications like mobile charger and home appliances / devices. Medium input voltages like 200V DC, 450V DC, 1000V DC are used for inverters used in photo-voltaic solar panels systems and electrical cars chargers.

What is a high voltage power inverter?

High input voltages like 100000V DC or higher are used for inverters used in high voltage DC power transmission stations / lines. What is the power inverter typical outputs?

There are 3 parameters that will define the output of power inverter, and they are the frequency, the voltage, and power capacity.

How many inverter output voltages are there

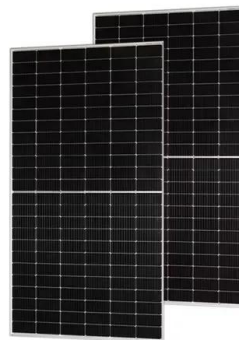


Solar Transformers: Sizing, Inverters, and E ...

May 29, 2024 · Learn all about transformer sizing and design requirements for solar applications--inverters, harmonics, DC bias, overload, bi-directionality, ...

How many volts is suitable for solar inverter

Jul 31, 2024 · To determine the appropriate voltage for a solar inverter, one must consider several factors that directly influence the inverter's performance and ...



Grid-Tie Inverter Theory and Operation Confusion

Mar 6, 2023 · The start up voltages and the maximum voltages and current of the inverter, the panel's max voltage and current and obviously the output voltages (to make sure its suited to ...

Understanding inverter voltage

Jan 10, 2024 · Inverter voltage typically falls into three main categories: 12V, 24V, and 48V. These values signify the nominal direct current (DC) input voltage required for the inverter to function

...



How Many Amps Can a 3000-Watt Inverter ...

Jul 1, 2024 · The output ampere is typically 13A for a 3000-watt inverter in a 230V power system. This output can run 20-30 ceiling fans, 2-3 refrigerators, and 10 ...

Lecture 23: Three-Phase Inverters

Feb 24, 2025 · One might think that to realize a balanced 3-phase inverter could require as many as twelve devices to synthesize the desired output patterns. However, most 3-phase loads are ...



Checklist for Choosing an Inverter

Check for the data on open circuit voltages on the panels and inverters respectively and do the comparison. Rated power output gives the maximum output power in watts of the inverter. DC ...

Inverter Voltage Calculator, Formula, Inverter Voltage ...

3 days ago · Inverter Voltage Formula: Inverter voltage (VI) is an essential concept in electrical engineering, particularly in the design and operation of power electronics systems. It describes ...



Contact Us

For catalog requests, pricing, or partnerships, please visit:
<https://www.chrisnell.co.za>