

Solar Storage Container Solutions

How big of an inverter should a 48v be equipped with



Overview

What size inverter do I Need?

In order to determine what size inverter you need, you have to know how much power your load draws. If you use an inverter that is not capable of providing enough current to your load, then it will overheat and shut down.

What are the different solar inverter sizes?

Solar generators range in size from small generators for short camping trips to large off-grid power systems for a boat or house. Consequently, inverter sizes vary greatly. During our research, we discovered that most inverters range in size from 300 watts up to over 3000 watts. In this article, we guide you through the different inverter sizes.

How much power does an inverter need?

The continuous power requirement is actually 2250 but when sizing an inverter, you have to plan for the start up so the inverter can handle it. Third, you need to decide how long you want to run 2250 watts. Let's say you would like to power these items for an eight-hour period.

What voltage should a 12V inverter run on?

The input voltage of the inverter should match the battery voltage. (For example 12v battery for 12v inverter, 24v battery for 24v inverter and 48v battery for 48v inverter Summary What Will An Inverter Run & For How Long?

.

How to choose a power inverter?

Second, select an inverter. For this example, you will need a power inverter capable of handling 4500 watts. The continuous power requirement is actually 2250 but when sizing an inverter, you have to plan for the start up so the inverter can handle it. Third, you need to decide how long you want to run

2250 watts.

How much battery do I need to run a 3000-watt inverter?

You would need around 24v 150Ah Lithium or 24v 300Ah Lead-acid Battery to run a 3000-watt inverter for 1 hour at its full capacity Here's a battery size chart for any size inverter with 1 hour of load runtime Note! The input voltage of the inverter should match the battery voltage.

How big of an inverter should a 48v be equipped with



What Size Inverter Do I Need for a 200AH Battery?

Dec 15, 2023 · To determine the appropriate inverter size for a 200AH battery, you need to consider the total wattage of the devices you plan to power. A general rule is to choose an ...

48V Inverter: The Ultimate Guide to Efficient and Scalable

...

May 19, 2025 · Can I use a 48V inverter with my existing solar panels? How many batteries do I need for a 48V inverter system? Is a 48V inverter safe for home use? Can a 48V inverter ...



Can an Inverter Be Too Big for Your Battery System?

When sizing for 24V or 48V systems, recalculate using the higher voltage. A 48V 100Ah lithium battery (4.8kWh) paired with a 5000W inverter works because $48V \times 100Ah \times 1C = 4800W$

How Do You Calculate the Appropriate Inverter Size for a 48V ...

Oct 28, 2024 · To calculate the appropriate inverter size for a 48V battery system, you need

to determine the total wattage of the devices you plan to power. The formula is: Inverter Size

...



✓ TELECOM CABINET

✓ BRAND NEW ORIGINAL

✓ HIGH-EFFICIENCY



Can A 48V Inverter Connect To A 24V Battery? Compatibility

...

Mar 30, 2025 · No, a 48V inverter cannot work with a 24V battery. It needs a 48V DC input to operate correctly. If you provide only 24V, the inverter may not start or will shut down often. To

...

Inverter Max Input Amps, Generator size, cable size?

Feb 27, 2022 · I'm looking to replace my 24V Magnum MS4024PAE inverter with two of the 4448 (48V) versions (stacked). I will use a 240V generator TBD for charging my bank. What should ...



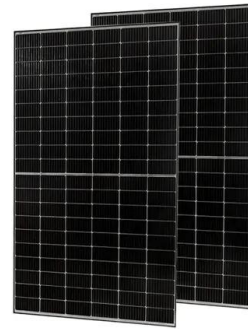
When to Use a 24V or 48V Battery System Instead of a 12V ...

The power inverter would need to be rated for power above 3840W, typically it would have to be a 5000W inverter. So from 1W to 480W, a 12V system should be sufficient. Above 480W to ...

Is a 48V Inverter Better Than a 12V or 24V System?

Feb 6, 2025 · Share Post: If you're setting up an off-grid power system or upgrading your current setup, you've likely run into a big question: should you choose a 12V, 24V, or 48V inverter?

...



The Only Inverter Size Chart You'll Ever Need

Mar 3, 2023 · Here's a battery size chart for any size inverter with 1 hour of load runtime. Note! The input voltage of the inverter should match the battery voltage. (For example 12v battery for

...

How Big an Inverter Should a 48 Volt RV Be Equipped With

Summary: Choosing the right inverter size for your 48V RV is critical for efficient power management. This guide simplifies the selection process by analyzing power needs, ...



inverter size (single phase) for (UK) house

Mar 1, 2024 · Recommendations on inverter size? Large house with 3 kids and typical electronics, plus 2 adults working from home - typical use is 30kWh per day (seems a lot to me but there it ...

Understanding Battery Capacity and Inverter Compatibility

Aug 20, 2024 · This calculation assumes ideal conditions with no inefficiencies. In reality, factors such as inverter efficiency and battery discharge characteristics might affect the actual run ...



Why You Should Choose A 48V Lithium Battery For Your Solar Inverter

Dec 16, 2022 · What is a Lithium Battery 48V? A Lithium Battery 48v is perfect for solar-powered applications. They are lightweight and have a high energy density, which means they can ...

Contact Us

For catalog requests, pricing, or partnerships, please visit:
<https://www.chrisnell.co.za>