

Solar Storage Container Solutions

How big does the inverter need to be to drive a 30kw motor



Overview

Before we go any further, we highly recommend that you choose a pure sine wave inverter. This type of inverter delivers high-quality electricity, similar to your utility company. This way, none of your appliance.

What size inverter do I Need?

Inverters come in different sizes starting from as little as 125 watts. The typical inverter sizes used for residential and commercial applications are between 1 and 10kW with 3 and 5kW sizes being the most common. With such an array of options, how do you find the right size for you?

An inverter works best when close to its capacity.

How to calculate inverter size?

Using the Inverter Size Calculator is quick and easy. You'll need three inputs: Total Wattage (W): This is the total power consumption of all the appliances or devices you plan to run through the inverter. Safety Factor: A multiplier to ensure some buffer above your actual power requirement. Typically ranges from 1.1 to 1.5.

What are the different solar inverter sizes?

Solar generators range in size from small generators for short camping trips to large off-grid power systems for a boat or house. Consequently, inverter sizes vary greatly. During our research, we discovered that most inverters range in size from 300 watts up to over 3000 watts. In this article, we guide you through the different inverter sizes.

How to choose the right inverter power?

Avoids Overloading: By selecting the right inverter power with a safety margin, you prevent overtaxing the system and potential breakdowns. To guarantee a reliable power supply, it is essential to align the continuous output of the inverter with or surpass the total wattage requirements of all connected devices.

What is the power output of an inverter?

Power output is the maximum continuous power the inverter can supply to all the loads on the system. Exceeding the power rating by having a larger load (too many appliances) than the inverter can handle will cause it to shut down. The power output of a 3 kW inverter for example is 3000 watts (3 kW).

How do I Choose an RV inverter?

Calculate the total wattage by adding up the running watts of all appliances. Take into consideration the surge requirements of appliances with electric motors. Choose an inverter size that's at least 20% larger than the total calculated wattage. Identify the largest power draws in your RV to accurately size the inverter for your specific needs.

How big does the inverter need to be to drive a 30kw motor



✓ LIQUID/AIR COOLING

✓ ON GRID/HYBRID

✓ PROTECTION IP54/IP55

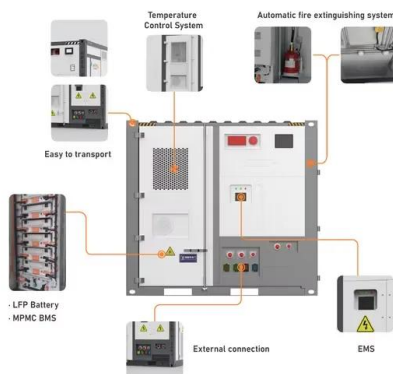
✓ BATTERY /6000 CYCLES

Solar Inverter Sizing: What Size Solar Inverter Do ...

Aug 17, 2025 · Solar inverter sizing is a major part of going solar. In order to get the most out of your solar PV system, you need to make sure that your ...

Macfarlane Generators Power Calculator

A 1 Hp electric motor therefore will require 3-4kVA for start up. Once the 1 Hp electric motor has started, it will only consume 1 kVA leaving a extra 2-3kVA available for other appliances. ...



How Do I Calculate What Size Inverter I Need?

Jun 3, 2024 · Having the right size inverter is vital for operating your appliances and devices properly. An undersized inverter will overload and potentially fail when trying to meet higher ...

How do I determine if a battery will adequately power an electric motor

Jan 27, 2017 · The battery does not have high enough voltage (3.2V battery vs 40-450 motor),

so you need to change the voltage by connecting more such batteries in serie (10 and more), or ...

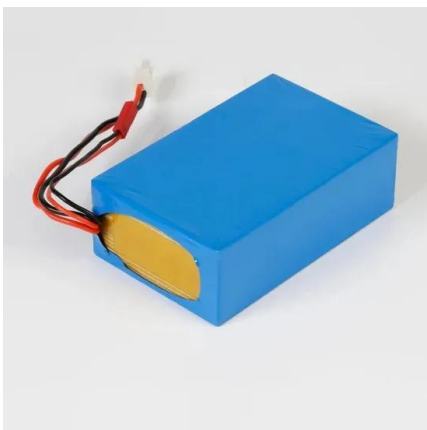


Solar Panel Inverter Size Calculator: Know What ...

Dec 9, 2024 · Planning to install solar panels? You'll need a solar inverter. Follow this guide to calculate the best solar panel inverter size for your system.

How To Calculate The Right Inverter Size For Your Needs

Jan 25, 2025 · Learn how to calculate the right inverter size for your needs with this detailed guide. Discover essential steps, tips, and factors to ensure optimal performance for your solar ...

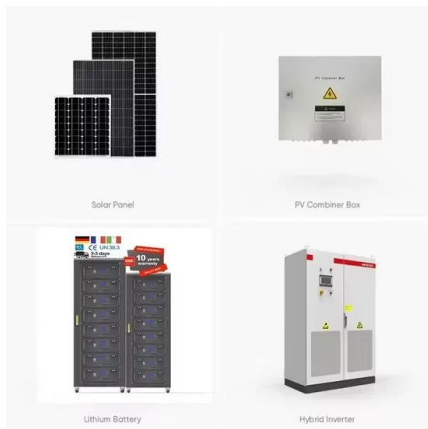
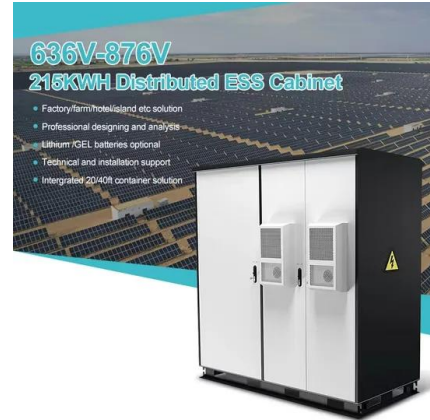


How big an inverter does a 30kw photovoltaic system require

As the photovoltaic (PV) industry continues to evolve, advancements in How big an inverter does a 30kw photovoltaic system require have become critical to optimizing the utilization of ...

Inverter Size Calculator [Power Inverter, AC, DC, ...

Feb 7, 2025 · To calculate the size of an inverter, multiply the total wattage of connected devices by a safety factor, then divide by the inverter's efficiency. ...



Advice on selecting an inverter - Sinetech

Advice on selecting an inverter Before choosing an Inverter for your needs, we recommend you read this page and note the definitions explained. This will help you understand why certain ...

What size inverter do you need for a 100ah ...

Oct 17, 2022 · What size inverter for a 100Ah battery? For appliances that use a relatively low amount of power, such as laptops, lights, TVs, and small fridges, ...



Contact Us

For catalog requests, pricing, or partnerships, please visit:
<https://www.chrisnell.co.za>