

## Solar Storage Container Solutions

**How big an inverter should I use for a 24kw photovoltaic panel**



## Overview

---

### What size solar inverter do I Need?

A 4.5 kW array (or ten 450-watt solar panels) would just about cover your consumption. The type of solar panels you choose can also impact the size of the inverter you need. Different types of solar panels have different wattage ratings and efficiency levels. The three main types of solar panels are monocrystalline, polycrystalline, and thin film.

### Can a solar inverter be undersized?

A solar inverter can be undersized in two ways, buying a smaller inverter or increasing the number of existing solar panels. Undersizing the inverter results in more power clipping, meaning that the inverter discards excessive power generated by the solar panels. Determining the size of the inverter you need is determined by a few critical factors:

### How to size an inverter?

If you want to know how to size an inverter, the answer is simple. All you have to do is find out how much power your devices need. Then, do some simple math to determine how much more power you need to compensate for inverter losses and headroom.

### How much power does an inverter need?

Naturally, you'd need to spec the inverter to deliver the maximum power required, even if it is only for a short time, such as when accommodating surges from a motor or fridge compressor starting. Should the home draw, for example, 2500 watts at peak consumption, the inverter should have a continuous power output rating of at least 2500 watts.

### Why are solar inverters sized lower than kilowatt peak?

Inverters are usually sized lower than the kilowatt peak (kWp) of the solar array because solar panels rarely achieve peak power. The solar array-to-

inverter ratio is calculated by dividing the direct current (DC) capacity of the solar array by the inverter's maximum alternating current (AC) output.

How to choose the right inverter power?

**Avoids Overloading:** By selecting the right inverter power with a safety margin, you prevent overtaxing the system and potential breakdowns. To guarantee a reliable power supply, it is essential to align the continuous output of the inverter with or surpass the total wattage requirements of all connected devices.

## How big an inverter should I use for a 24kw photovoltaic panel

---



### How big an inverter should I use for a 1000W ...

How big an inverter should I use for a 1000W photovoltaic panel How do I choose a solar inverter size? To calculate the ideal inverter size for your solar PV system, you should consider the ...

### What size inverter is best for a 24kw photovoltaic power ...

Most installations slightly oversize the inverter, with a ratio between 1.1-1.25 times the array capacity, to account for these considerations. The size of the solar inverter you need is directly ...



### How big an inverter should a photovoltaic power station ...

Jan 18, 2024 · How do I choose a solar inverter size? To calculate the ideal inverter size for your solar PV system, you should consider the total wattage of your solar panels and the specific ...

### How big an inverter is needed for photovoltaic grid ...

How big should a solar inverter be? times the array capacity, to account for these considerations. The size of the solar inverter you need is directly related to the output of your solar

panel array. ...



## What size inverter is best for a 24kw photovoltaic power ...

: Check our inverter size chart. List all your a t size of inverter. But there''s another factor to consider. Opting for a pure sine inverter ensures e that''s at least 20% larger than the total ...

## How many kilowatts of inverter do 24kw photovoltaic panels ...

As the photovoltaic (PV) industry continues to evolve, advancements in How many kilowatts of inverter do 24kw photovoltaic panels require have become critical to optimizing the utilization

...



☒ IP65/IP55 OUTDOOR CABINET

☒ OUTDOOR CABINET WITH AIR CONDITIONER

☒ OUTDOOR ENERGY STORAGE CABINET

☒ 19 INCH



## How big an inverter should I use for five photovoltaic ...

To calculate the ideal inverter size for your solar PV system, you should consider the total wattage of your solar panels and the specific conditions of your installation site. The general rule is to ...

## How big an inverter should I use for photovoltaic power ...

The inverter converts the DC electricity from the panels (and battery if present) into AC electricity for home use. Its size should be at least as large as the PV array output under peak ...

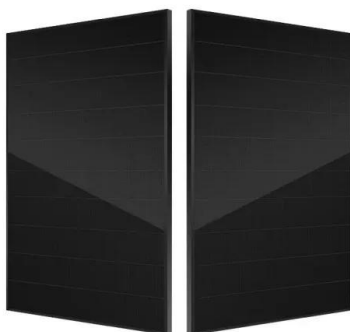


## Solar panel inverters & costs: the expert guide ...

Dec 14, 2023 · Solar panel inverters play a crucial role in any solar panel system, ensuring that the energy harvested from the sun is usable within your home. ...

## How to Decide Solar Inverter Capacity for Your Home

Learn how to choose the right solar inverter capacity for your home to ensure optimal energy efficiency and long-term savings. Discover key factors, sizing guidelines, and expert tips to ...



## How big an inverter should I use for a 27kw photovoltaic ...

How big should a solar inverter be? Most installations slightly oversize the inverter, with a ratio between 1.1-1.25 times the array capacity, to account for these considerations. The size of the ...

## How big an inverter should I use for a 300w solar panel

Inverter Size Needed To Run A TV And Lights. Generally, a 300-watt inverter should be enough to run your TV and household lights. More specifically, a 300W inverter is big enough to run an ...



## How big an inverter is needed for photovoltaic grid ...

This paper aims to select the optimum inverter size for large-scale PV power plants grid-connected based on the optimum combination between PV array and inverter, among several

## How To Size an Inverter: Solar Inverter Sizing Explained

Aug 19, 2025 · Getting the inverter size right depends on two key factors: Inverters work most efficiently when operating near their maximum capacity ...



## How big an inverter should I use for a 6 kW photovoltaic ...

How big should a solar inverter be? As a general rule of thumb, the size of your inverter should be similar to the DC rating of your solar panel system; if you are installing a 6 kilowatt (kW) ...



## Inverter Size Calculator [Power Inverter, AC, DC, ...

Feb 7, 2025 · Calculate the ideal inverter size with the Inverter Size Calculator. Perfect for selecting inverters for homes, solar panels, or vehicles based on ...



## 24kW Solar System: Price, Load Capacity, How Big, and More

Jul 18, 2023 · How Much Will a 24kW Solar System Save? When it comes to saving money with solar power, a 24kW solar system can make a significant impact. On average, this system can ...



## What Size Inverter Do I Need for a 100 Watt ...

Aug 11, 2024 · Nowadays, many inverters have a charge controller module inside the inverter, so that the inverter also has the function of monitoring, so that the ...



## How big should the photovoltaic inverter

How do I choose a solar inverter size? To calculate the ideal inverter size for your solar PV system, you should consider the total wattage of your solar panels and the specific conditions ...





## Contact Us

---

For catalog requests, pricing, or partnerships, please visit:  
<https://www.chrisnell.co.za>