

Solar Storage Container Solutions

How big an inverter should I use for 47kW



Overview

Before we go any further, we highly recommend that you choose a pure sine wave inverter. This type of inverter delivers high-quality electricity, similar to your utility company. This way.

We have summarized the appliances that inverters from 300W to 3000W can run depending on their rated maximum power. Note to our readers: Use the above formula to determine.

A solar inverter should closely match your solar system's output in kW—typically within 80% to 120% of your total panel capacity. Too big = wasted money. Too small = wasted energy. How big should a solar inverter be?

Generally, it's recommended to size the inverter to 80-100% of the DC system's rated capacity. Before determine the inverter size, the most important thing is to calculate your average daily power consumption (kWh) and calculate your solar panel array size to match your power consumption. You could follow our to make this estimation.

Do I need an inverter size chart?

The need for an inverter size chart first became apparent when researching our DIY solar generator build. Solar generators range in size from small generators for short camping trips to large off-grid power systems for a boat or house. Consequently, inverter sizes vary greatly.

How does the inverter size calculator work?

Our Inverter Size Calculator simplifies this task by accurately estimating the recommended inverter capacity based on your solar panel power and quantity. By inputting your panel's rated power and number of panels, the calculator produces a recommended inverter power range that aligns with 80-100% of your system's total DC capacity.

How much power does a 5 kW inverter use?

If your system pushes 5,000 watts, a 5,000-watt (or 5 kW) inverter is usually the move. But it's not always one-to-one. Some setups undersize the inverter

a bit—say, 4.6 kW for 5 kW of panels—to save cash without losing much power. It's a balancing act between cost, performance, and when you actually use electricity.

How do I size an inverter?

To accurately size the inverter, I must calculate the total wattage needed, factoring in both running watts and surge requirements of the devices. Adding a safety margin of 20 % ensures that the inverter can handle unexpected power spikes without overloading.

What is a recommended inverter power range?

By inputting your panel's rated power and number of panels, the calculator produces a recommended inverter power range that aligns with 80-100% of your system's total DC capacity. This approach ensures that your inverter is neither under-sized—risking energy losses and performance issues—nor over-sized, which can lead to unnecessary costs.

How big an inverter should I use for 47kW

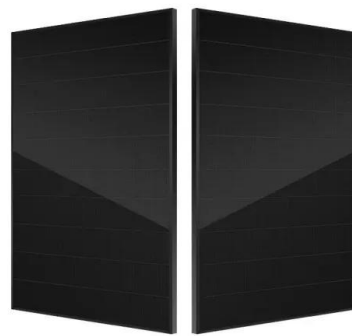


How big an inverter should I use for a 10 megawatt ...

How do I choose a solar inverter size? To calculate the ideal inverter size for your solar PV system, you should consider the total wattage of your solar panels and the specific conditions ...

How big an inverter should I use for a 11kw photovoltaic ...

The following illustration shows what happens when the power inverter's DC/AC ratio is not large enough to process the higher power output of mid-day. consider a south-facing, 20& #176;-tilt



How big of an inverter should I use for a 52kw ...

How do I choose a solar inverter size? To calculate the ideal inverter size for your solar PV system, you should consider the total wattage of your solar panels and the specific conditions ...

What Size Inverter Do I Need? A Complete Guide to ...

Jun 12, 2025 · Discover how to select the perfect inverter size for your solar or backup power system. Learn to calculate power requirements, account for surge loads, match battery ...



How big an inverter should I use for photovoltaic power ...

The inverter converts the DC electricity from the panels (and battery if present) into AC electricity for home use. Its size should be at least as large as the PV array output under peak ...

How big an inverter should I use for a 120kw ...

Nov 4, 2024 · To calculate the ideal inverter size for your solar PV system, you should consider the total wattage of your solar panels and the specific conditions of your installation site. The ...



How big an inverter should I use for a 27kw photovoltaic ...

How big should a solar inverter be? Most installations slightly oversize the inverter, with a ratio between 1.1-1.25 times the array capacity, to account for these considerations. The size of the ...



How big an inverter should I use for solar panels

How big should a solar inverter be? You can size it between 1.15 and 1.5 times larger. The rule of thumb is to size your inverter 1.25 bigger than your solar array. In some cases, you may need ...



Solar inverter size: Calculate the right size for ...

2 days ago · Getting the inverter size right depends on two key factors: Inverters work most efficiently when operating near their maximum capacity and are ...

How big an inverter should I use for a 120kw photovoltaic ...

Nov 4, 2024 · About How big an inverter should I use for a 120kw photovoltaic panel As a general rule of thumb, the size of your inverter should be similar to the DC rating of your solar panel ...



How big an inverter should I use for a 27kw photovoltaic ...

Nov 26, 2022 · Most installations slightly oversize the inverter, with a ratio between 1.1-1.25 times the array capacity, to account for these considerations. The size of the solar inverter you need ...

How big an inverter should I use for a 170kw photovoltaic

To calculate the ideal inverter size for your solar PV system, you should consider the total wattage of your solar panels and the specific conditions of your installation site. The general rule is to ...

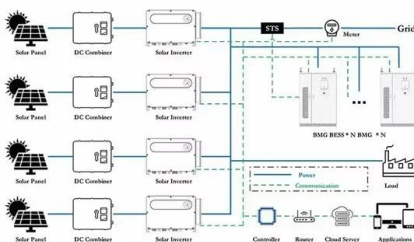


How big an inverter should I use for a 27kw photovoltaic panel

Nov 26, 2022 · As the photovoltaic (PV) industry continues to evolve, advancements in How big an inverter should I use for a 27kw photovoltaic panel have become critical to optimizing the ...

How to Choose the Right Size Solar Inverter: Step-by-Step ...

Jul 15, 2025 · Wondering what size solar inverter do I need for your solar system? This guide walks you through calculating inverter size based on panel capacity, power usage, and safety ...



How big an inverter should I use for a 12kw photovoltaic ...

To calculate the ideal inverter size for your solar PV system, you should consider the total wattage of your solar panels and the specific conditions of your installation site. The general rule is to ...

HOW TO SIZE AN INVERTER FOR A SOLAR SYSTEM

How big an inverter should I use for a 300w solar panel For a 300 watt solar panel, you need anywhere between 500-1500 watt capacity inverter. However, the exact size you need will ...



HOW BIG AN INVERTER DO I NEED FOR 10KW SOLAR

How big an inverter should I use for a 300w solar panel For a 300 watt solar panel, you need anywhere between 500-1500 watt capacity inverter. However, the exact size you need will ...

How big an inverter should I use for five photovoltaic ...

How big an inverter should I use for five photovoltaic panels How do I choose a solar inverter size? To calculate the ideal inverter size for your solar PV system, you should consider the ...



HOW BIG AN INVERTER SHOULD I USE FOR A 33KW ...

How big should a solar inverter be? Most installations slightly oversize the inverter, with a ratio between 1.1-1.25 times the array capacity, to account for these considerations. The size of the ...

How big an inverter should I use for a 120kw ...

How do I choose a solar inverter size? To calculate the ideal inverter size for your solar PV system, you should consider the total wattage of your solar panels and the specific conditions ...



How To Size A Solar Inverter in 3 Easy Steps

most common solar inverter size for the home is 5 kW or 6.6 kW. Some homeowners opt for 2 kW or 3 kW inverters for very small solar arrays. What Size Inverter Do I Need for a 6.6 kW Solar ...

Contact Us

For catalog requests, pricing, or partnerships, please visit:
<https://www.chrisnell.co.za>