

## Solar Storage Container Solutions

**How big a photovoltaic panel  
should a 45A battery be  
matched with**



## Overview

---

Note: If you already have a solar panel and want to know how long it will take to charge your battery, use our solar battery charge time calculator.

How many watts a solar panel to charge a 24v battery?

You need around 600-900 watts of solar panels to charge most of the 24V lithium (LiFePO4) batteries from 100% depth of discharge in 6 peak sun hours with an MPPT charge controller. Full article: [What Size Solar Panel To Charge 24v Battery?](#)

What Size Solar Panel To Charge 48V Battery?

.

How to choose a battery for a solar panel?

Let's look at how to choose the battery for a solar panel. A good general rule of thumb for most applications is a 1:1 ratio of batteries and watts, or slightly more if you live near the poles.

How many solar panels to charge a 60Ah battery?

You need around 175 watts of solar panels to charge a 12V 60ah Lithium (LiFePO4) battery from 100% depth in 5 peak sun hours with an MPPT charge controller. Full article: [What Size Solar Panel To Charge 60Ah Battery?](#)

.

How many solar panels to charge a 150ah battery?

You need around 550 watts of solar panels to charge a 12V 150ah Lithium (LiFePO4) battery from 100% depth of discharge in 4 peak sun hours with an MPPT charge controller. Full article: [What Size Solar Panel To Charge 150ah Battery?](#)

.

How many watts a solar panel to charge a lithium battery?

You need around 1600-2000 watts of solar panels to charge most of the 48V lithium batteries from 100% depth of discharge in 6 peak sun hours with an MPPT charge controller. What Size Solar Panel To Charge 120Ah Battery?

.

How many solar panels to charge a 200Ah battery?

You need around 730 watts of solar panels to charge a 12V 200ah Lithium (LiFePO4) battery from 100% depth of discharge in 4 peak sun hours with an MPPT charge controller. Full article: What Size Solar Panel To Charge 200Ah Battery?

## How big a photovoltaic panel should a 45A battery be matched with

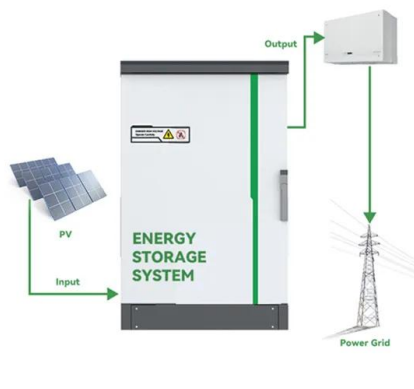
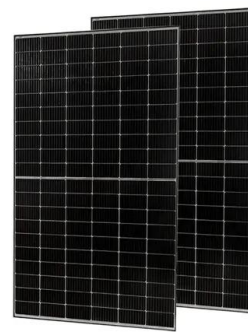


### Ultimate Guide to Sizing Your Solar PV System

4 days ago · Discover how to size a solar PV system with our interactive calculator. Learn about panel wattage, battery capacity, and the impact of solar irradiance on energy production.

### How big a photovoltaic panel should a 90A battery be ...

Here are some real-world examples of solar panel sizes for different battery capacities and charging times, assuming 5 peak sun hours per day and 80% system efficiency: Example 1: ...



### How big a photovoltaic panel should an inverter be ...

How do I choose a solar inverter size? To calculate the ideal inverter size for your solar PV system, you should consider the total wattage of your solar panels and the specific conditions ...

### HOW BIG A BATTERY SHOULD I USE FOR A 45W PHOTOVOLTAIC

How big a battery should I use for a 45w18v photovoltaic Battery sizes are measured by their

capacity to store electricity, but it's important to consider usable capacity rather than just what ...

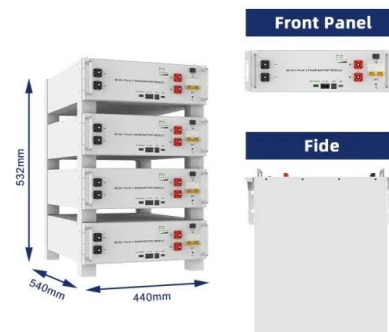


## How big a photovoltaic panel should I use for 60a

The most common solar panel sizes for residential installations are between 250W and 400W, while larger commercial installations may use panels up to 500W or more. The size of a ...

## Solar Panel To Battery Ratio (Kw + Watts)

Sep 9, 2022 · Ideally, no matter your application, the 1:1 ratio is a good rule to follow, especially for small solar setups under a kilowatt. A 100-watt panel and 100aH battery is an ideal small ...

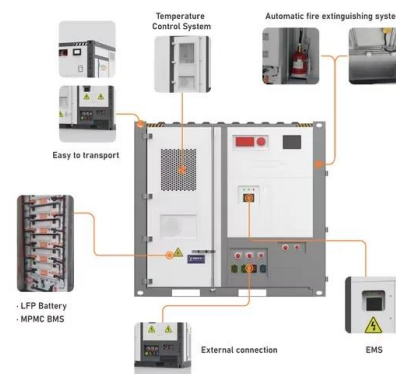


## How big should my battery be?

Nov 1, 2022 · INTRODUCTION When solar photovoltaic system installations are being considered today, two questions arise. First, how big should the solar system be and secondly, should a ...

## DESIGN AND CONSTRUCTION OF A 45A SOLAR CHARGE ...

The main scope of project is, the photovoltaic cells are converting the sunlight in to electricity a charge controller is used. PV cells are bundled together in modules or panels to produce ...



## How many watts of solar panel bracket are needed to charge a 45a battery

Turns out, 100 watt solar panel will take about 9 peak sun hours to fully charge a 12v 100ah lead acid battery from 50% depth of discharge. how fast should you charge your battery?

## How big a photovoltaic panel should a 260W solar ...

ECO-WORTHY 130 Watt 12V Flexible Mono solar panel is backed by 25-year linear power guarantee. ECO-WORTHY LiFePO4 Lithium Iron Phosphate Battery has twice the power, half ...



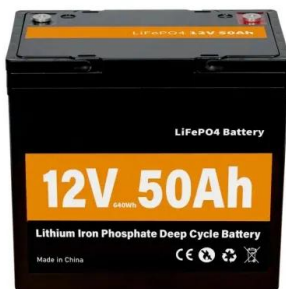
## How big a controller do photovoltaic panels need

How big should a solar charge controller be? 400W solar panel system and a 12V battery bank. You would divide 400 by 12, giving you a minimum of 33.33 Amps. This means your solar ch ...



## How big a photovoltaic panel does a 45A battery require

Dec 18, 2020 · How big a system can you back feed to a breaker? The system the way it is right now 9.2 kw and it has been inspected and running for 2 ½ months. 225 amp main load center ...



## HOW BIG A BATTERY SHOULD BE MATCHED WITH HOW ...

Here's an overview of the best batteries by size on the market today: For Large Energy Needs: Panel and battery match-up: For a solar photovoltaic (PV) system of 5 kW with a daily energy ...

## How big a battery should I use with a 90W photovoltaic ...

How big a battery should I use with a 90W photovoltaic panel For a solar photovoltaic (PV) system of 5 kW with a daily energy consumption of 5-10 kWh, a 4 kWh battery is recommended to ...



- ☒ IP65/IP55 OUTDOOR CABINET
- ☒ ALUMINUM
- ☒ OUTDOOR ENERGY STORAGE CABINET
- ☒ OUTDOOR MODULE CABINET

## How to match photovoltaic panels with batteries

made, Matching Solar Panel to Battery Size. Let's explore the ideal solar panel sizes. for common battery specifications: 12V Battery. Fo. a 12V battery system, you'll want a solar



## How many amps should the photovoltaic panel ...

How much Watts should a solar panel charge controller be rated for? The amp rating charge controller should be rated for between 10 to 20% of the full bank capacity in amp-hours. ...



## How big a battery should I use for a 45W photovoltaic

How Many Batteries Do I Need for a 100 Watt Solar ... Typically, 100-watt solar panels have size measurements of around 47 x 21.3 x 1.4 inches. The best way to use your 100-watt solar ...

## How big a photovoltaic panel should a 48v battery be matched ...

To charge the 36V/48V battery bank with either PWM or MPPT charge controller, the solar panel voltage should be more than 36V/48V. But in some cases, you may only have just one single ...



## How big a controller do photovoltaic panels need

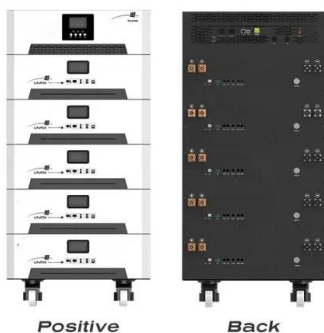
How big should a solar charge controller be? Let's say you have a 400W solar panel system and a 12V battery bank. You would divide 400 by 12, giving you a minimum of 33.33 Amps. This ...





## How big a solar panel should an energy storage inverter ...

Determining the right sizes for solar panels, batteries, and inverters is essential for an efficient and reliable solar energy system. Accurate sizing ensures your system meets energy needs, ...



## HOW BIG AN INVERTER SHOULD I USE FOR A 33KW ...

How big should a solar inverter be? Most installations slightly oversize the inverter, with a ratio between 1.1-1.25 times the array capacity, to account for these considerations. The size of the ...

## How big should my battery be?

Nov 1, 2022 · INTRODUCTION aic system installations are being considered today, two questions arise. First, how big should the solar system be and secondly should a battery be installed? ...



## How big a solar panel should I use for a 45a electric cabinet

PV solar panels tend to vary between 250w to 460w per panel, depending on the size of it and the cell technology used to create each of the modules. To calculate the ...

## HOW BIG A BATTERY SHOULD BE MATCHED WITH HOW ...

The size (capacity) of the battery should also be carefully matched to the energy demands of the solar system to avoid overloading or under-utilization. Charging And Discharging. During ...



## How big a photovoltaic panel should be matched with ...

How big a photovoltaic panel should be matched with how big a battery should be matched Step 1: Turn on all the appliances and devices you want to power with the solar panel system. Step ...

## How big a battery should be used for off-grid ...

Use our off-grid solar system calculator to determine how large your solar panel system and battery bank should be. Skip to content Take Advantage of 30% Solar Tax Credits Today! ...



## How big a photovoltaic panel should I use for a 48v battery

Can a solar panel charge a 48v battery? 12V and 24V solar panel systems are still the most commonly used, but 48V batteries are becoming prevalent. If you want to buy a 48V battery, ...

## How big a battery should I use with a 40W photovoltaic ...

How big a battery should a 40w photovoltaic panel be equipped with. In this article, we'll explore the nuances of sizing a solar battery and lay out a process for determining the ideal battery



Standard 20ft containers



Standard 40ft containers



## How big a photovoltaic panel should match

Solar Panel Sizing Sizing PV panels always starts with how much energy the home consumes Use the monthly average of last year's utility bills to find energy that needs replacing with PV ...

## Contact Us

---

For catalog requests, pricing, or partnerships, please visit:  
<https://www.chrisnell.co.za>