

Solar Storage Container Solutions

Gel battery inverter power is low



Overview

Does a hybrid inverter/charger have low voltage protection?

Both our standard inverter and hybrid inverter/chargers have low voltage protections. In a hybrid inverter, you may get warning about "battery low voltage" or "battery over-discharge", and in a standard system your charge controller and inverter may show a fault or shut off due to low battery voltage.

How long does a gel battery last?

GEL typically charges to around 14.0-14.2V/12V, and it needs to stay there for 2-4 hours. Your 150Ah batteries may be limited to 30-45A of charging, but your 3270W of PV may charge them at 60A, which will shorten their life. Are all four of your GEL 12V at the same voltage when at peak absorption?

.

What causes a battery to lose power?

The most common cause of a decrease in capacity is from insufficient re-charging of the battery bank. If the batteries are left in a partially charged state, the lead plates in the battery will degrade and will not hold as much energy as when the batteries were brand new.

Gel battery inverter power is low

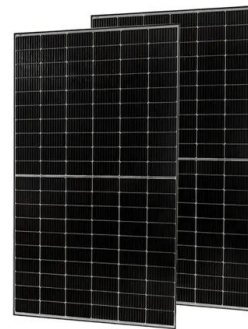


The Role of Inverter Gel Batteries in Uninterruptible Power ...

5 days ago · During a power outage, the inverter gel battery instantly steps into action, providing a surge of DC power to an inverter. This miraculous device converts the DC power into AC ...

The Role of Gel Batteries in Enhancing Inverter Performance

Aug 15, 2025 · By selecting the right gel battery for the specific inverter application, users can optimize inverter performance, ensuring uninterrupted power supply and extended battery life. ...



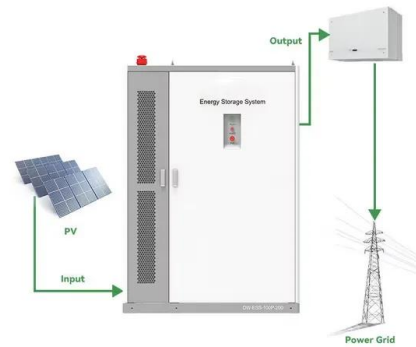
Gel battery losing charge fast and weird inverter behavior

Nov 20, 2023 · Recently, the batteries are getting discharged fast, losing voltage under very low load (less than 1 amp at 230 volts), even with just the inverter connected to it. In a couple of ...

How to Fix Inverter Battery

Apr 5, 2025 · Inverters rely on their batteries to provide backup power during outages, and when

the battery malfunctions, your entire system may fail. Fortunately, many battery issues are ...



Common Issues with Inverter Gel Batteries and How to ...

4 days ago · Understanding common issues with inverter gel batteries and their troubleshooting techniques is essential for maximizing battery performance and lifespan. By addressing these ...

Common Issues with Inverter Gel Batteries and How to ...

4 days ago · Inverter gel batteries are widely used in various applications due to their high efficiency, long lifespan, and low maintenance requirements. However, like any other battery ...



Ampinvt 6000W 48v Hybrid Solar Inverter 120V/240v Split

...

Sep 2, 2022 · Ampinvt 6000W 48v Hybrid Solar Inverter 120V/240v Split Phase Output Built-in 100A MPPT Solar Controller, Off Grid Low Frequency Pure sine Wave Inverter Charger, for ...

What Are Inverter Batteries, And How Do They Work?

Jul 3, 2024 · The inverter charges the battery with a low current when the main power supply is available. During a power cut, the inverter quickly switches to battery power, converting DC to ...



Inverter not resuming charge and batteries running flat

3 days ago · This inverter has a built-in function to shut down after a set time if it detects a low power consumption. I even connected an extra 250 watt load, thinking that this might be the ...

Help with cut-off voltage setting for Gel ...

Jan 30, 2023 · If you want your batteries to last then you should rarely go below 24V which is most likely the highest setting for cutoff on your inverter, I have ...

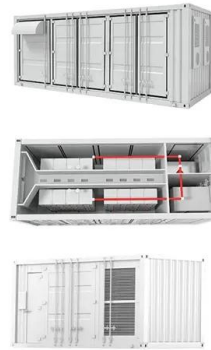


Low DC cut-off voltage

Nov 4, 2019 · I need some advice. I have installed a 24v 3kva mecer Axpert -MKS inverter on line. I have connected 250Ah (10h) gel batteries that can go as low as 1.55 V/Cell (which translates ...

Top 10 Inverter Battery Brands in India 2025

Jun 13, 2025 · Looking for the best inverter battery in India? Check out the top 10 brands in 2025 offering powerful, durable, and efficient solutions for reliable power backup.

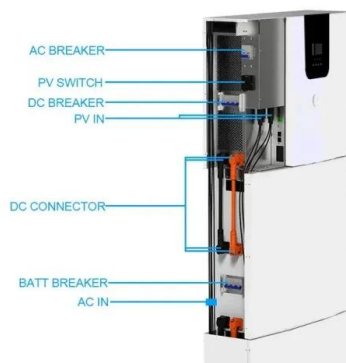


Why is my inverter shutting off due to "battery ...

Jun 24, 2021 · Both our standard inverter and hybrid inverter/chargers have low voltage protections. In a hybrid inverter, you may get warning about "battery ...

Problem with inverter? High and low voltage error messages

Nov 28, 2023 · About two weeks ago the inverter started beeping again at the night (not every night), now showing an error message that the battery voltage is too low. The voltage reading ...

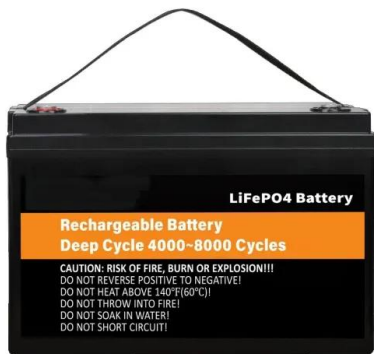


The Benefits of Inverter Gel Batteries for Reliable Power Supply

Aug 19, 2025 · This low-maintenance design significantly reduces the cost and effort associated with battery upkeep, making them a cost-effective option for long-term use. Inverter gel ...

Methods for Repairing GEL Batteries - Leading ...

May 29, 2024 · Charge the Battery: If the gel battery is low on power, try charging it with an appropriate charger designed for gel batteries. Make sure to use the ...



How to Troubleshoot Common Issues with Solar Panel Gel Batteries

Aug 15, 2025 · Solar panel gel batteries are a popular choice for off-grid and backup power systems due to their longevity, durability, and low maintenance requirements. However, like ...

Deep Discharge: How Far Can You Drain a 12V Gel Battery?

May 21, 2025 · Gel batteries tolerate deep discharges better than flooded batteries, but frequent deep cycling still shortens lifespan. Recommended DoD (Depth of Discharge): 50%-70% for ...



Methods for Repairing GEL Batteries - Leading ...

May 29, 2024 · However, here are some methods you can try to potentially revive or improve the performance of a gel battery. Charge the Battery: If the gel ...

Gel battery dropping capacity with no load

Nov 2, 2022 · According to the display on the charge controller, the batteries have always been dropping capacity (from 5 bars when full to 3 bars) immediately or within an hour after sunset ...



How to turn off inverter when battery voltage too low

Aug 5, 2020 · I don't know why this happens. I worry that this will happen sometime when we are away and I will ruin my (already old) batteries with my fridge usage. I would like to protect ...

WHAT ARE GEL BATTERIES? All You Need to Know

Dec 22, 2024 · What is a gel battery? Gel batteries are types of batteries that use gel-like electrolytes. The gel-like electrolyte is obtained by mixing sulfuric acid ...



Voltage Drops and Capacity Loss in GEL Batteries

Feb 25, 2025 · Excessive Discharge: Deep discharges beyond 50% regularly can shorten battery life. Loose or Corroded Connections: Poor connections increase resistance, leading to voltage ...

Contact Us

For catalog requests, pricing, or partnerships, please visit:
<https://www.chrisnell.co.za>