

Solar Storage Container Solutions

Does the power grid need a base station

LPR Series 19'
Rack Mounted



Overview

The assumptions that base-load power stations are necessary to supply base-load demand and to provide a reliable supply of grid electricity have been disproven by both practical experience in electricity grids with high contributions from renewable energy and by hourly computer simulations. Are base-load power stations necessary?

The assumptions that base-load power stations are necessary to supply base-load demand and to provide a reliable supply of grid electricity have been disproven by both practical experience in electricity grids with high contributions from renewable energy and by hourly computer simulations.

Can an electricity grid function without baseload power?

An electricity grid cannot function without substantial baseload power. Given the nature of demand, most power requires baseload power supplies, and a certain minimum energy must be maintained to prevent blackouts or system failures.

What is the difference between a grid station and a substation?

Grid stations serve as large, high-voltage hubs that transfer bulk power over long distances and interconnect different transmission systems or regions. They manage large-scale power flows and help balance supply and demand across the grid. Substations, on the other hand, focus on voltage transformation and local power distribution.

Where are grid stations located?

Grid stations are strategically located at points where region-wide transmission systems converge. They are fundamental in large-scale energy systems, especially for handling renewable energy integration and addressing national power demands. What are Substations?

.

How are power stations connected to the grid?

Power stations in Canada, including those operated by the British Columbia Hydro and Power Authority (BC Hydro), are generally connected to the electrical grid. BC Hydro is a Canadian electric utility in the province of British Columbia.

What are the major grid substations of POWERGRID?

Major Grid Substations of POWERGRID - The following is a list of major grid substations: Creation of National Grid Milestones International Cooperation National Electricity Plan II Green Energy Corridor GoI funded Schemes CTU and STUs Private Participation MoUs with POWERGRID Important Orders/ Guidelines/ Notifications/ Reports

Does the power grid need a base station



What is a base station energy storage battery? , NenPower

Mar 7, 2024 · A base station energy storage battery is a crucial component of telecommunication infrastructure, designed to improve the efficiency and reliability of network operations. 1. These ...

Optimal battery size for a green base station in a smart grid ...

Oct 27, 2017 · Green base stations, powered by renewable energy sources, have mainly been restricted to remote areas. In urban areas, recent technological advancements have st



Understanding the Texas power grid: how it works and why ...

6 days ago · Discover how the Texas power grid works, why it's unique, and how to prepare for outages. Learn about ERCOT, grid vulnerabilities, and backup power solutions for energy ...

Optimum sizing and configuration of electrical system for

Jul 1, 2025 · Proposed a model for optimal sizing

& resources dispatch for telecom base stations. The objective is to achieve 100% power availability while minimizing the cost. Results were ...



Base Station Energy Storage: The Unsung Hero of the World Power Grid

This isn't sci-fi - it's the base station energy storage revolution reshaping our world power grid. Let's unpack how these unassuming tech hubs are becoming grid game-changers.

Do You Need the Base Stations for Valve Index: A Must-Have

...

Oct 23, 2024 · The Valve Index has garnered significant attention for its immersive virtual reality experience, but many potential buyers wonder if the base stations are an essential component ...



To Strive forward No Energy Waste



- ✓ All in one
- ✓ 100~215kWh High-capacity
- ✓ Intelligent Integration

Generating electricity - WJEC Responding to ...

Mar 15, 2024 · The demand for electricity varies throughout the day. When the demand for electricity is greater than the base load, the National Grid reacts ...

A technical look at 5G energy consumption and performance

Sep 17, 2019 · Figure 3: Base station power model. Parameters used for the evaluations with this cellular base station power model. Energy saving features of 5G New Radio The 5G NR ...

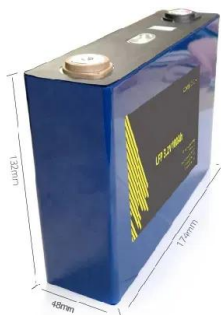
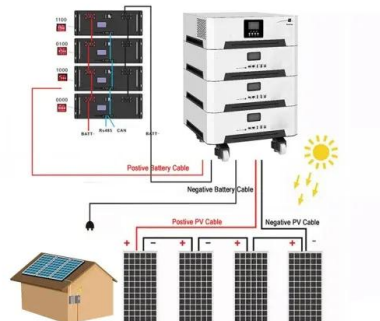


How Does the SteamVR Base Station 2.0 Work: A ...

Jun 6, 2024 · Secondly, the Base Station 2.0 requires power to function. It features a power input port, allowing you to connect it with an electrical outlet. A power cable is included in the ...

Does VR Need a Base Station? Exploring the Importance of Base Stations

May 14, 2024 · Definition And Role Of A Base Station In Virtual Reality A base station in virtual reality (VR) is a device that plays a crucial role in tracking the user's movement and position ...



Base load power: The dinosaur in the energy ...

Oct 12, 2017 · Base load power is a term we're hearing a lot in discussions about our energy future. But what does it mean, and is it really relevant? Because ...

Power Supply Solutions for Wireless Base Stations Applications

The telecommunications infrastructure and equipment is becoming increasingly more sophisticated, as wireless technology evolves, so does the need for increasingly more reliable ...



Why do base stations need energy storage? , NenPower

Mar 13, 2024 · 1. Base stations require energy storage primarily for efficient energy management, uninterrupted power supply, renewable energy integration, and enhanced operational ...

Optimum sizing and configuration of electrical system for

Jul 1, 2025 · A detailed analysis was conducted under different grid power availabilities and base station load profiles heterogeneous to different geographical locations where ...



National Wind Watch , The Grid and Industrial Wind Power

Wind power has no effect on base load. However, since base load providers can not be ramped down, if wind turbines produce power when there is no or little peak load, the extra electricity ...

What's Are Electrical Substations? A Guide To Power Grids

May 24, 2024 · The Role of Transmission Substations in the Power Grid Transmission substations form a crucial part of the entire power grid. They play an indispensable role in ensuring a ...

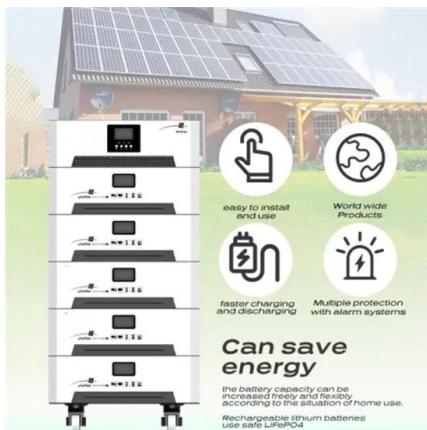
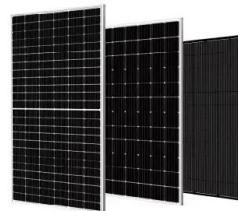


Why Do Base Stations Need Energy Storage? The Power ...

Telecom engineers, sustainability advocates, and curious tech enthusiasts will discover how energy storage keeps base stations humming - even when the grid throws a tantrum. Let's ...

Understanding Grid Stations, Substations, and ...

Apr 25, 2025 · In short, a grid station is the backbone of long-distance. Load Balancing: Grid stations ensure electricity demand is met by efficiently routing ...



Baseload: Exploring the myths behind Australia's ...

Jun 13, 2018 · "In Australia we need to get at least one or two of these [coal-fired power stations] built to ensure there's enough baseload power in the grid." ...

What Is Power Grid and How Does It Work?

The power grid is one of the most critical infrastructures in the world. It is a network that generates, transmits, and distributes electricity, ensuring that power reaches consumers ...



WHAT IS THE PURPOSE OF A BASE STATION

What is the traditional configuration method of a base station battery? The traditional configuration method of a base station battery comprehensively considers the importance of the 5G base ...

Contact Us

For catalog requests, pricing, or partnerships, please visit:
<https://www.chrisnell.co.za>