

Solar Storage Container Solutions

Communication mobile base station safety distance



Overview

Mobile phones and other mobile devices require a network of base stations in order to function. The base station antennas transmit and receive RF (radio frequency) signals, or radio waves, to and from.

Do mobile phones need a base station?

Mobile phones and other mobile devices require a network of base stations in order to function. The base station antennas transmit and receive RF (radio frequency) signals, or radio waves, to and from mobile phones near the base station. Without these radio waves, mobile communications would not be possible.

How do base stations work?

Base stations transmit and receive radio waves to connect the users of mobile phones and other devices to mobile communications networks. The strength of the radio waves from base station antennas reduces rapidly with increasing distance and the levels at locations where the public can be exposed tend to be small.

Are radio base stations harmful?

The WHO states: “From all evidence accumulated so far, no adverse short- or long-term health effects have been shown to occur from the RF signals produced by base stations.” (WHO fact sheet “Base stations and wireless technologies”) Mobile phones and mobile devices require a network of radio base stations to function.

Are mobile phones dangerous to people living near base stations?

In the UK, the Independent Expert Group on Mobile Phones (IEGMP) concluded in its 2000 report that the balance of evidence indicates that there is no general risk to the health of people living near base stations on the basis that exposures are expected to be small fractions of guidelines.

How much exposure can a radio base station have?

On the ground, in houses, and other places where people reside, the exposure levels from radio base stations are normally below 1 percent of the limits. Only in the close vicinity of the antennas can the exposure limits sometimes be exceeded.

How can a base station be regulated?

Control of exposures occurs through product safety legislation, health and safety legislation and planning policy. These regulatory areas all consider the international guidelines. With some of the larger and more powerful base stations, there can be regions around the antennas within which the guideline levels can be exceeded.

Communication mobile base station safety distance



Exposure from mobile phones, base stations and ...

Since exposure of the general public, including children, to radio waves from the wireless local area networks and base stations is far below the exposure limits, there is no need to further ...

Safety Distance Calculations for Macrocell Mobile Base Station ...

Nov 19, 2017 · Wireless mobile communication networks have become essential for human life. A great booming and huge investments are devoted to develop the services without taking into ...



Risk Communication Guide for Mobile Phones and Base ...

Sep 26, 2023 · Typical levels from base stations in publicly accessible areas are far below international safety recommendations. This is comparable to radio and television broadcast ...

Communication base station

Dec 23, 2024 · However, without base station coverage, the mobile phone signal in the community will deteriorate. For example, some residents in the community previously resisted ...

114KWh ESS



Electromagnetic Assessment on Human Safety of Mobile Communication Base

In this work, measurements of radiation level emitted from the base stations were made using a hand held GQ-380 EMF RF meter, the distance was measured at the interval of 20 m from the ...

Prediction of Safety Distance of Antenna Electromagnetic ...

The author studies the prediction of the safety distance of GSM900 mobile communication base station by theoretical and field measurement, the horizontal safety distance being 26 meters, ...

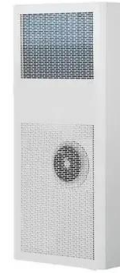


Safety Distance Calculations for Macrocell Mobile Base Station ...

Wireless mobile communication networks have become essential for human life. A great booming and huge investments are devoted to develop the services without taking into considerations ...

Determination of Safe Distance Limit from Cellular base ...

Jan 31, 2024 · In principle, RF levels decrease rapidly when a person moves further away from the transmitting antenna. For each antenna, the RF level can be measured based on its ...



Protective Distances in Mobile Communication

Sep 13, 2002 · Abstract: The increasing number of base stations in mobile communications causes considerations about possible adverse health effects. In the present paper, protective ...

Mobile Phone Base Stations EMF / Health Fact Pack

Jul 10, 2013 · The guidelines apply to mobile phones as well as base station sites and incorporate wide safety margins to protect against all established health effects of RF exposure.

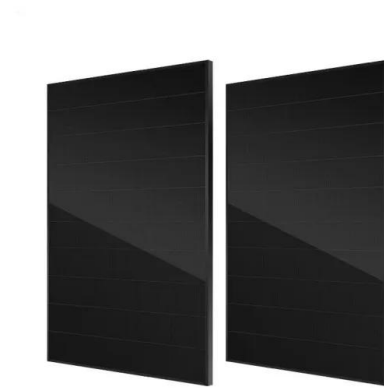


Risk Communication Guide for Mobile Phones and Base ...

Jul 18, 2017 · The Mobile & Wireless Forum is an international association of companies with an interest in mobile and wireless communications including the evolution to 5G and the Internet ...

Radiation and health

4 days ago · Mobile telephony is now commonplace around the world. This wireless technology relies upon an extensive network of fixed antennas, or base stations, relaying information with ...



Safety Distance Calculations for Macrocell Mobile Base Station ...

Nov 19, 2017 · Wireless mobile communication networks have become essential for human life. A great booming and huge investments are devoted to develop the services without ta

B18: Mobile Phone Base Stations

Dec 2, 2024 · This guidance provides information for Managing Agents on the Electronic Communications Code and the management of risk where mobile base stations are located on ...



Installation of Base Stations and Radiation Safety

Jul 21, 2025 · The rollout of 5G services needs the establishment of an extensive network of radio base stations and small cells to support very high-speed data transmission and ubiquitous ...

Assessment of Radiation Variations with Dis-tance in the ...

Feb 7, 2023 · Abstract- Electromagnetic radiations from GSM (global system for mobile communications) base stations were measured at far fields at a distance above 50 meters ...



Risk Communication Guide for Mobile Phones and Base ...

Published: September 2023 The Mobile & Wireless Forum is an international association of companies with an interest in mobile and wireless communications. The MWF focuses on a ...

Contact Us

For catalog requests, pricing, or partnerships, please visit:
<https://www.chrisnell.co.za>