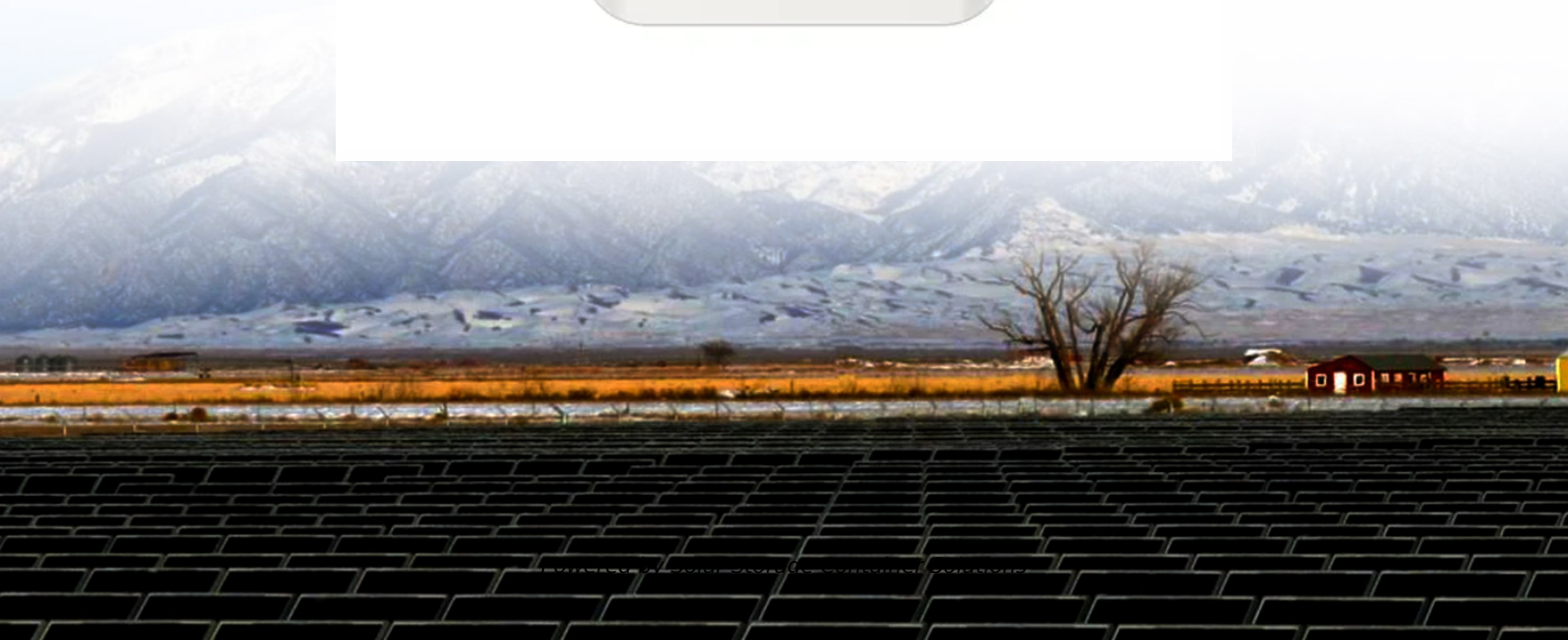


Solar Storage Container Solutions

China-Europe communication base station wind and solar complementary approval



Overview

When was the first wind-solar complementary power generation system launched in China?

The successful grid connection of a 54-MW/100-kWp wind-solar complementary power plant in Nanâ€™ao, Guangdong Province, in 2004 was the first windâ€™solar complementary power generation system officially launched for commercialization in China.

Does China have a potential for hydro-wind-solar complementary development?

China has made considerable efforts with respect to hydro- wind-solar complementary development. It has abundant resources of hydropower, wind power, and solar power and shows promising potential for future development.

How is hydro-wind-PV complementation achieved in China?

At present, most hydro-wind-PV complementation in China is achieved by compensating wind power and PV power generation by regulating power sources, such as a unified dispatch of hydropower and pumped-storage power stations on the grid side.

Is there a correlation between wind and solar energy in China?

By calculating the Kendall rank correlation coefficient between wind and solar energy in China, the study mapped the spatial distribution of wind-solar energy complementarity. Han et al. proposed a complementary evaluation framework for wind-solar-hydro multi-energy systems based on multi-criteria assessment and K-means clustering algorithms.

What is hydro wind & solar complementary energy system development?

Hydroâ€™windâ€™solar complementary energy system development, as an important means of power supply-side reform, will further promote the

development of renewable energy and the construction of a clean, low-carbon, safe, and efficient modern energy system.

What are the characteristics of wind and solar energy potential in China?

Wind and solar energy potential show similar characteristics in most parts of China, especially in the northern and southern parts of China. A few regions exhibit complementary characteristics, including the southeastern coastal areas and northeastern regions.

China-Europe communication base station wind and solar compleme



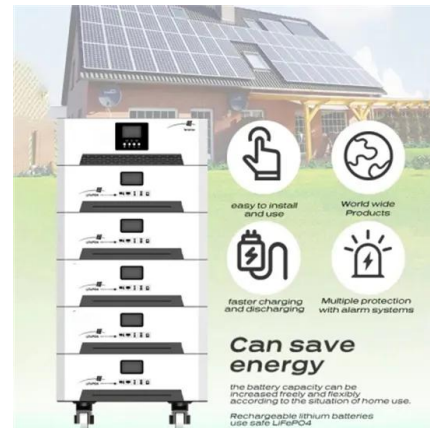
Overview of hydro-wind-solar power complementary development in China

Aug 1, 2019 · From development and planning, operation control and simulation modeling, it focuses on the development mechanism of hydro- wind-solar power complementary, ...

wind solar complementary power supply system news

Nanjing Oulu Electric Corp has been deeply involved in the communication base station wind solar complementary project for many years, providing a complete set of integrated solutions

...



An overview of the policies and models of integrated ...

Jun 1, 2023 · This study is organized as follows: Section 2 describes the development status of wind and solar generation in China. Section 3 provides the policies of integrated development

...



Research on Comprehensive Complementary Characteristics

...

Dec 9, 2021 · Taking wind power stations, photovoltaic stations and hydropower stations in

a province of Southwest China as examples, the complementary operation characteristics of ...



Communication base station large solar energy ...

A mobile communication base station and cooling system technology, which is applied in the field of high-efficiency cooling system for outdoor mobile communication base station equipment, ...



Solar power generation system installation at China ...

In remote areas far from the power grid, such as border guard posts, islands, mountain weather stations, communication base stations, and other places, wind power and photovoltaic power ...



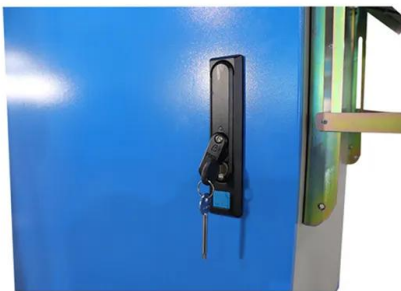
Assessing the potential and complementary characteristics of China...

Aug 15, 2025 · In-depth analysis of the spatiotemporal changes in wind and solar energy potential and complementarity in China: Based on future predictions under different scenarios, this ...



SDIC Power Accelerates Overseas Investment in Clean Energy to Promotes High Quality

Jul 18, 2022 · The Yalong River Lianghekou Kela one million-kilowatt hydro-solar complementary power station, the first large-scale hybrid hydro-solar project of ...



Europe, China "complementary" in green transition: Italian ...

Dec 6, 2024 · Highlighting China's achievements in wind and solar power generation, the report says that in 2023 China saw a 66 percent increase in wind energy production from a year earlier.

Design of Off-Grid Wind-Solar Complementary Power ...

Feb 29, 2024 · Currently, wind-solar complementary power generation technology has penetrated into People's Daily life and become an indispensable part [3]. This paper takes a 1500 m high ...



Multi-timescale scheduling optimization of cascade hydro-solar

Jan 27, 2025 · Multi-timescale scheduling optimization of cascade hydro-solar complementary power stations considering spatio-temporal correlation , Science and Technology for Energy ...

EcoChina , China's pursuit of wind and solar power ...

BEIJING, Jan. 17 (Xinhua) -- From the land to the sea, China's pursuit of green energy has promoted the development of wind power and solar power industries. In the context of the ...



Lithium Solar Generator: \$150



The wind-solar hybrid energy could serve as a stable power ...

Oct 1, 2024 · In addition, the authors found that the complementary strength between wind and solar power could be enhanced by adjusting their proportions. This study highlights that hybrid ...

Design of Oil Photovoltaic Complementary Power Supply

May 15, 2025 · In response to the construction needs of such scenarios, in order to solve the power supply problem of mobile communication base stations, the natural resource conditions ...



Solar power generation system installation at China ...

Solar power generation system installation at China communication base station Using renewable energy system in powering cellular base stations (BSs) has been widely accepted as a ...

Introduction of wind solar complementary power supply

...

Apr 25, 2022 · The wind solar complementary power supply system of communication base station is composed of wind turbine generator, solar cell module, communication integrated ...



Application of photovoltaics on different types of land in China

Mar 1, 2024 · As of the end of 2022, China has amassed an impressive 390 million kW of installed PV capacity, occupying approximately 0.8 million km² of land [3]. With the continuous growth ...

Communication base station large solar energy

To accelerate the construction of large-scale wind and PV power bases in deserts and Gobi areas, and actively promote the construction of multi-energy and complementary clean energy ...

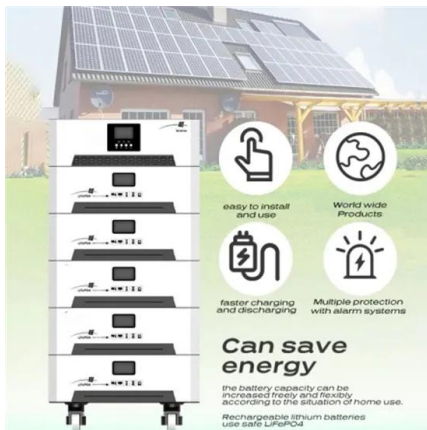


Approval and progress analysis of pumped storage power stations

Nov 15, 2024 · China has completed 70.90 % of the total capacity target of 210 gigawatts for key implementation projects during the "14th Five-Year Plan". Pumped storage power stations in ...

Communication base station solar energy storage ...

The Energy storage system of communication base station is a comprehensive solution designed for various critical infrastructure scenarios, including communication base stations, smart



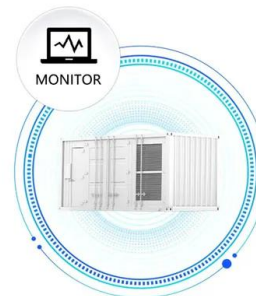
communication station power supply system news

It has mature solutions and a large number of application cases, and has a large market share in China. The system configuration of the communication base station wind solar complementary ...

The kickoff meeting for the two energy industry standards

Sep 13, 2024 · The "Wind Solar Complementary Off grid Control Inverter Integrated Machine" specifies the definition, technical requirements, testing methods, and inspection rules of the ...

SUPPORT REAL-TIME ONLINE
MONITORING OF SYSTEM STATUS



Europe, China "complementary" in green transition: Italian ...

Dec 6, 2024 · Highlighting China's achievements in wind and solar power generation, the report says that in 2023 China saw a 66 percent increase in wind energy production from a year ...

communication station power supply system news

The system configuration of the communication base station wind solar complementary project includes wind turbines, solar modules, communication integrated control cabinets, battery ...



Communication Base Station Energy Power Supply System

The wind-solar-diesel hybrid power supply system of the communication base station is composed of a wind turbine, a solar cell module, an integrated controller for hybrid energy ...

Contact Us

For catalog requests, pricing, or partnerships, please visit:
<https://www.chrisnell.co.za>