

Solar Storage Container Solutions

Can the photovoltaic inverter wifi be connected to the Internet



Overview

Wi-Fi solar inverters are inverters that can connect to the internet through a Wi-Fi network. Do wi-fi solar inverters work?

But it is no more. With the introduction of Wi-Fi solar Inverters, you can connect and monitor A to Z aspects in real-time—scan power to voltage and many more aspects of your solar system in a blink. Today, we will elaborate on the Wi-Fi solar inverters and discuss their connection! If playback doesn't begin shortly, try restarting your device.

Does a WiFi solar inverter drain your battery?

Having your inverter linked to WiFi doesn't significantly drain your battery. In the solar energy world, wifi solar inverters are making waves. They change how we see and control solar systems. With these smart gadgets, your inverter links to the internet.

What is solar inverter Wi-Fi monitoring?

Solar inverter Wi-Fi monitoring refers to using a solar inverter connected to the internet to monitor the state of your solar system from anywhere. The solar inverter is connected to your home Wi-Fi and feeds information about your solar panels to an app you can check anywhere in real-time.

How do I connect my solar inverter to WiFi?

Launch the app and select 'WiFi Configuration' at the login page. Alternatively, you can select the WiFi icon at the homepage. After you have checked that the solar inverter is turned on, click 'Next'. Connect your device to the WiFi network and select 'Solar-Wifi*' using the password 12345678.

Why should I connect my Wi-Fi-enabled solar inverter?

Connecting your Wi-Fi-enabled solar inverter isn't just a technical process—it's your passport to the future of renewable energy. Sun 2 Solar empowers you with cutting-edge IoT solar inverter technology that transforms how you

interact with your energy system.

How to connect a Huawei solar inverter to WiFi?

The steps to connect a Huawei solar inverter to Wi-Fi are: To initiate the process, download the FusionSolar app from either the Google Play or Apple App stores. For every succeeding step, you will require your solar inverter and a WiFi capable device with the FusionHome app installed. Log into your inverter through the FusionSolar app.

Can the photovoltaic inverter wifi be connected to the Internet



SUN2000L COMMISSIONING GUIDE EU

Oct 24, 2018 · Troubleshooting: If both, Wi-Fi and Mobile Data are turned on, you can connect to the inverter via Wi-Fi and access the internet via mobile data, only if the phone is able to work ...

Reconnect Fronius Inverter to WiFi

Jul 31, 2024 · SOLAR INVERTER TO WIFI - INSTRUCTIONS Fronius inverter has disconnected from the internet, which can property has recently been upgraded to NBN, if your wifi get a ...



How to Connect Solar Inverter to WiFi - TechFine Step-by ...

Jun 11, 2025 · With TechFine's intelligent solar inverters equipped with integrated WiFi modules for solar inverters, users can now monitor their system remotely via a smartphone or web ...

Step-by-Step Guide: Connecting Your Growatt Inverter to WiFi ...

Feb 5, 2023 · These inverters can be easily connected to a home's WiFi network, allowing

users to monitor the performance of their solar energy system remotely. In this article, we'll provide a ...



How do you configure the inverter to connect it to the internet?

4 days ago · With a device on which we have activated the wifi function, we search for the wi-fi network generated by the inverter and connect. Enter the PK of the inverter (Product Key) as ...

Wi-Fi Module and SolarPower App User's Manual

Jun 4, 2020 · 1. Introduction Wi-Fi module can enable wireless communication between hybrid inverters and monitoring platform. Simply put this module connected to an inverter with ...



How to Connect a Solar Inverter to WiFi: A Step-by-Step ...

Mar 30, 2025 · As solar technology evolves, modern solar inverters come with smart monitoring features that allow users to track their system's performance remotely. Connecting your solar ...

Wi-Fi Solar Inverters: How They Work & How to ...

Sep 7, 2022 · Wi-Fi solar inverters are inverters that can connect to the internet through a Wi-Fi network. Through this network and a smart device, you can ...



How to Connect Solar Inverter to WiFi: A Simple ...

Jun 16, 2024 · Connecting your solar inverter to WiFi allows for remote monitoring and control of your system's performance. The process varies slightly between ...



Configure Internet Connection

Apr 3, 2025 · Internet connectivity is required to receive the full 10-year Powerwall warranty, and for the customer to see their system in the Tesla App. Connect to customer's Wi-Fi. For ...



Application scenarios of energy storage battery products

Can photovoltaic inverters be connected to the Internet

All grid-connected PV inverters are required to have over/under frequency protection methods (OFP/UFP) and over/under voltage protection methods (OVP/UVP) that cause the PV inverter

Step-by-Step Guide: Connecting GoodWe Inverter to Wi-Fi

Step-by-Step Guide: Connecting GoodWe Inverter to Wi-Fi Download and Open PV Master Install it from the App Store or Google Play Store. Open the app and select "Local Mode." Connect to ...



How To Connect Solar Inverter With Wifi

Feb 21, 2025 · To connect the Wi-Fi to your solar inverter, follow these steps: Get ready for connection. Power up your inverter. Check WiFi compatibility and requirements. Access the ...

Why Connect Your Solar Inverter to WiFi? Unlocking the ...

Jul 15, 2025 · Connecting your solar inverter to WiFi is a crucial step for both installers and end-users. By establishing this connection, users can remotely monitor their solar energy ...



Fronius inverter wifi drop off issues

Mar 16, 2025 · Inverter is located on the opposite side of the house from the WiFi router, however my phone and laptop can connect to WiFi from there, it was only the inverter being a pain.

Do Solar Panels Affect Wi-Fi? Understanding the ...

Sep 28, 2024 · Discover if solar panels affect Wi-Fi signals and how to prevent potential interference. Learn the facts and tips for maintaining strong connectivity.



Photovoltaic inverter wifi and router

Wi-Fi solar inverters are inverters that can connect to the internet through a Wi-Fi network. Through this network and a smart device, you can monitor the performance and energy data of ...

How To Connect Solar Inverter With Wifi

Feb 21, 2025 · To connect your solar inverter to WiFi, access your device's WiFi settings and connect to the inverter's temporary WiFi network. Open the Solar Edge App and follow the on ...



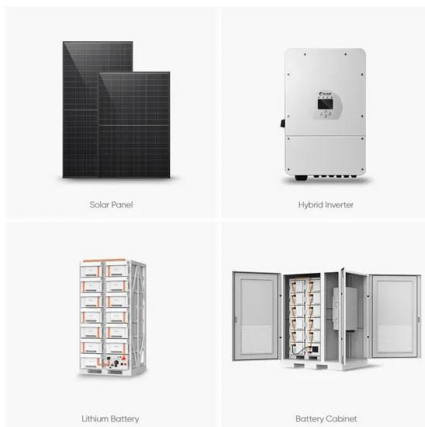
does solar continue to work if the internet is changed

Hello @Goodwin_8552, When you change your internet service provider or your home wifi password, your Gateway loses connection with the internet however, it does not affect your ...

Wi-Fi Solar Inverters: How They Work & How to Connect

...

Jul 5, 2025 · Wi-Fi solar inverters are inverters that can connect to the internet through a Wi-Fi network. Through this network and a smart device, you can monitor the performance and ...



Wi-fi Solar Inverters: How do they work? How to connect ...

Jun 15, 2024 · But it is no more. With the introduction of Wi-Fi solar Inverters, you can connect and monitor A to Z aspects in real-time--scan power to voltage and many more aspects of ...

Contact Us

For catalog requests, pricing, or partnerships, please visit:
<https://www.chrisnell.co.za>