

## Solar Storage Container Solutions

# Can the outdoor inverter be turned off



## Overview

---

Now, you know how to switch off inverter when not in use then you must also be curious about can inverter be switched off when not in use. Well, yes, you can switch off your inverter when your batteries are fully charged and it is not in use. Once the batteries are fully charged the.

The most interesting question that comes to mind after learning can inverter be switched off when not in use is does an inverter draw power when turned off?

The answer is yes, it draws power even when it is turned off. The amount of power your inverters will draw.

Every inverter work on electricity. Inverters are electricity consumers, even though they provide power backup to appliances at home or work. They are self-discharging applications, so you.

Now you know that your inverter draws power even when it is off, then you might think, can I leave my inverter on all the time, then let me tell you that it is unnecessary to leave.

Yes, you can switch off your inverter when the batteries are fully charged and it is not in use. But it is not advisable if you are not leaving home for 1 or 2 months. Can I Leave my inverter on all the time?

Yes, you can leave your inverter ON all the time if it's working under the rated capacity. Should I leave my inverter on all the time?

It depends on your use of energy. If you have the appliance connected to the inverter, it might need the power source to function, especially when using the inverter in the RV or traveling in remote places.

What happens if you turn off an inverter?

When there is a cut-off, the inverter will be activated and power the home appliances. The inverter battery keep gets draining even if you turn off the inverter. So it would not be a wise decision to keep the inverter off when not in use. Over time the energy stored in the inverter will be lost.

## When should I Turn Off my solar inverter?

During Maintenance – Turning off your luminous solar inverter can be necessary when cleaning or servicing it. 3. When Using Grid Power – Some homeowners switch off their solar inverter at night when there's no solar energy generation. Does Switching Off Affect the Inverter's Lifespan?

.

## How to switch off inverter when not in use?

To know how to switch off inverter when not in use you have two options. The first option is through the bypass by using the bypass switch on the back of the inverter. Then, on the front side of the inverter, you will find the on/off button which is required to press and hold button until the inverter is switched off.

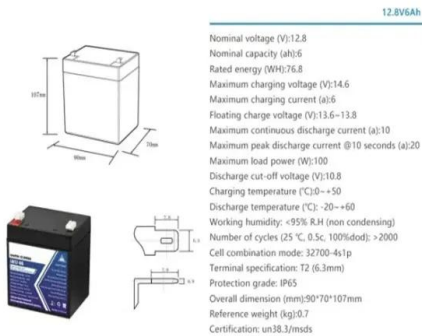
## How to turn off a solar inverter?

To turn off the inverter first, choose the bypass option using the bypass switch located on the back of the inverter. Then, on the front side of the inverter, you will find the on/off button. Press and hold that button until the inverter is switched off. If your inverter doesn't have a bypass switch, then you need to follow the following steps.

## Should you switch off a solar inverter when not in use?

When it comes to solar inverters, many homeowners wonder whether they should switch them off when not in use. Since a solar inverter for home plays a crucial role in converting DC power to AC for household appliances, understanding its optimal usage is essential.

## Can the outdoor inverter be turned off



## How to turn off the solar energy when it is not in ...

Jan 4, 2024 · When users opt to turn off their solar energy systems, there are essential methods to do so efficiently. Manual disconnection involves both ...

## Can the inverter be used when the motorhome engine is turned off

Nov 27, 2021 · Yes, when using low-power electrical appliances below 300 watts, a general motorhome battery can provide about 25-55 minutes of electricity with the engine turned off.

...



## Mini-Splits: Can You (Should You) Leave It On All ...

Jul 9, 2022 · Mini-splits work best when they run non-stop throughout the day. Designed as a "set-and-forget" solution, they automatically adapt to conditions ...

## Should we switch off inverter when not in use?

Does inverter charge battery when off? Originally  
 Answered: Battery will charge fast after

switching off inverter? No, as the inverter being used in our home is offline type that is it will ...



## [LG Air Conditioner Heating] [Inverter product] Outdoor unit

...

Jul 9, 2025 · [LG Air Conditioner Heating][Inverter product] Outdoor unit is on and off repeatedly. Learn how to use, update, maintain and troubleshoot your LG devices and appliances.



## How can your solar panels be remotely turned off?

Mar 24, 2025 · What if my wifi is down? If your wifi is down - maybe you've turned it off because you are away from home or for another reason, or your router is offline - then your inverter ...



## Can Solar Panels Be Turned Off? [Updated: August 2025]

Jan 9, 2023 · In this article, you'll learn about whether solar panels can be turned off and how to safely render them inactive. So, can solar panels be turned off? Yes, a solar panel system can ...

## Help Library: Help Library: [LG Air Conditioner Function][Inverter

Help Library: [LG Air Conditioner Function]  
[Inverter Product] The outdoor unit does not turn off even after reaching the target temperature.  
Learn how to use, update, maintain and ...

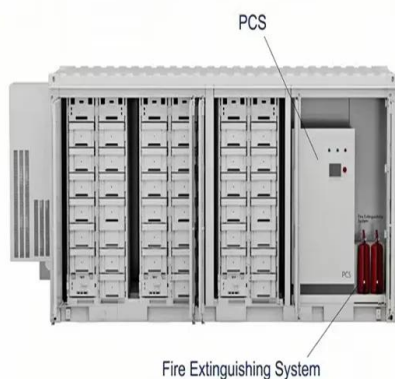


## 2025's Top Outdoor Power Pick: Off-Grid Inverters

Apr 2, 2025 · Introduction: Off grid inverters convert battery-stored DC energy into usable AC power, making it possible to run lights, appliances, and even tools without connecting to the ...

## Should we switch off inverter when not in use?

While charging, you can turn off the inverter.  
Even if the inverter is turned off, most inverters from Exide, Amaron, Microtek, and Luminous will charge the batteries, but you should not turn off ...



## (Inverter model) The outdoor unit keeps going on and off ...

May 25, 2022 · Help library: (Inverter model) The outdoor unit keeps going on and off during its operation. Learn how to use, update, maintain and troubleshoot your LG devices and appliances.

## should i leave my inverter on all the time ? , Pas ...

Jun 27, 2023 · Can I be leaving inverter on all the time? So, is it ok to leave inverter on all the time? It depends on your energy usage. If you have your ...



## Can I leave My Inverter ON All the Time?

Nov 17, 2023 · Yes, you can leave your inverter ON all the time if it's working under the rated capacity. Should I leave my inverter on all the time? It depends on your use of energy. If you ...

## Best Outdoor Rated Hybrid Inverter?

Jul 29, 2022 · BOTTOM LINE What is the best outdoor rated inverter that is compatible with the EG4 48v LiFePower4 batter, has built in MPPT controller for a couple of solar panels, and can ...



## Should we switch off inverter when not in use?

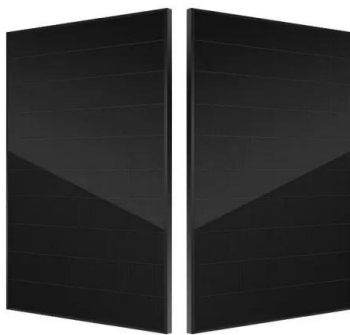
Even when not in use, the inverter uses power (1-10 watts). As a result, unless your system turns the inverter off when it's idle, you'd save some power by turning it off when it's not needed. ...



## Should solar inverter be on all the time

Sep 12, 2024 · A: If the solar inverter is turned off, it will not be able to convert the solar energy generated by your solar panels into electricity for your home. As ...

### ESS



## Should I Leave My Inverter On All the Time?

If you turn off the inverter every night and turn it on every morning, it can quickly turn into a chore. The bottom line: if you bought a solar inverter for your grid or off the grid PV system, there is ...

## Can You Leave an Inverter On All the Time? - ...

Jul 19, 2023 · In this article, we will explore the different aspects of using a solar inverter and provide insights on whether you should leave it on even when you ...



Test certification  
CE FC



## Inverter on or off when on shore power , Forest River Forums

Nov 21, 2019 · The OP is talking about an inverter, not converter. When on shore power the inverter can be left on or turned off. It is just in standby mode until it senses shore power going ...



## Can we switch off a 1000W inverter when not in use?

Oct 21, 2024 · If you are camping outdoors and use solar panels and inverters to power various devices, then night is a good time to turn off the inverter. Nighttime is usually a time when ...



### 3. Installation

Apr 23, 2025 · This product should be installed by a qualified electrician. During installation ensure that the remote connector with wire bridge is removed (or switch off the remote on/off ...

## Contact Us

---

For catalog requests, pricing, or partnerships, please visit:  
<https://www.chrisnell.co.za>