

Solar Storage Container Solutions

Battery cabinet voltage shows 0V



Overview

Why does my battery show 0 volts?

A short circuit affected the battery badly, and it got a dead cell, and now it shows 0 volts. You charged the battery with a faulty charger, and you keep using the battery instead, and now the battery is dead because of low power. Now even if you successfully revive the battery of 12V from 0 voltage, it will show 10 V power and not more than this.

Why is my lithium battery showing zero voltage?

Well, there is a possibility, and a point might come where you will read zero voltage in a lithium battery. It means there is no power left inside the batteries. Following are a few possible reasons why your lithium batteries are showing zero voltage: Hibernation Mode under 2 Volts.

How do you know if a battery is a gel or wet cell?

A gel or wet cell battery should show some voltage, even if discharged. If it's not showing any voltage, it could be due to the electrolyte level being below the plates, resulting in an 'open-circuit battery'. However, it's important to note that a battery might not recover fully if it has been quick-charged too often and the individual plates have buckled.

What does a 12-volt battery do?

A 12-volt battery supplies voltage to the solenoid to be able to open and close various components. When I measured the battery using my voltmeter on site, there was a reading of 0 volts, which I assumed was faulty. I then returned to my workplace where there was a brand new battery sitting on the parts shelf (last one there).

Can you recharge a lithium ion battery at zero voltage?

It is important to recharge the battery on time; otherwise, zero voltage situations will happen. Even if you try to revive and recharge a lithium-ion

battery at zero voltage, then it will only get charged to 10.5V or even reach 12.4V but not more than this, then the battery is already sulfated.

What causes a battery to die after a short circuit?

These are the two reasons that the short circuit took place. Once the battery shows zero voltage, that means the battery is damaged due to the short circuit. Therefore, even if you try your best and successfully revive the battery, it would be a waste. The charger didn't work. The battery died because you didn't charge it at the required time.

Battery cabinet voltage shows 0V



What are the reasons for the zero voltage of lithium-ion batteries

Jun 28, 2023 · Lithium-ion batteries are rechargeable only if you recharge them at the right time. Sometimes your lithium-ion battery shows zero voltage, and after even reviving them, it won't ...

2.4~19.2kWh quick installations manual v3.2

Nov 5, 2024 · Cable Connections of the Battery Parallel Connection NOTICE Before two or more batteries installed in parallel, please check the voltage of each battery and make sure the ...



LOW VOLTAGE DISTRIBUTION CABINET

The lithium-ion batteries that are commonly used in many electronic devices, such as laptops and light electric vehicles have a battery management system (BMS) that monitors the voltage of ...

battery voltage shown as '0.0V' when using HV packs

Nov 2, 2019 · Describe the bug OSD shows voltage of 0.0V when connecting fully charged

packs. To Reproduce connect a HV pack and watch the OSD. Expected behavior battery voltage ...

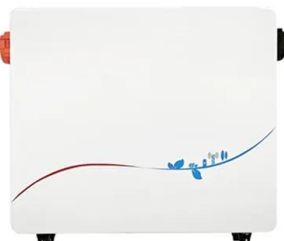


What are the reasons for the zero voltage of lithium-ion batteries

Jun 28, 2023 · Sometimes your lithium-ion battery shows zero voltage, and after even reviving them, it won't give its best performance. What is the reason behind this zero voltage sign, ...

Stop circuit when battery drops below 3v? , Electronics Forums

Sep 24, 2013 · "The circuit is set up for a single-cell Lilon battery, where the lockout voltage--the voltage when the protection circuit disconnects the load from the battery-- is 3.0V. This ...



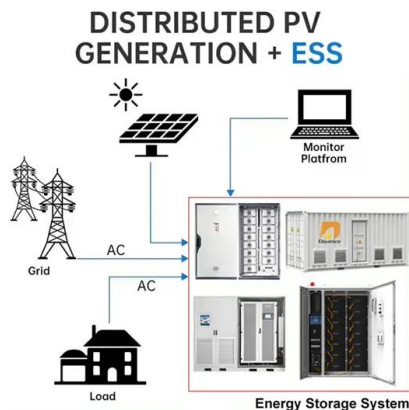
Why is my circuit reducing the voltage to 0?

Jan 4, 2015 · When I use the battery as shown in the image below (in parallel with a 10 Ω resistor) my voltage through the resistor (measured at points A and B) shows to be 0V. However, when ...

Why does the battery voltage become 0 Volt ? - LLT POWER

...

The discharge MOS of the protection board has been broken, the battery pack has no under-voltage protection, which will be easy for the Battery to be discharged completely to 0 Volt.



??????? (VBAT)
 ???????????????????

Apr 19, 2024 · ??????????: "VBAT;?????®
 ??????????
 MFS5520VIR????????????????????????????????????

Recovering a LiFePO4 cell (A123) at 0V

Jul 1, 2019 · I have a V1 Boosted Board with a broken battery. Some of the cells have discharged down to 0V and I wanted to ping the experts here on approaching cell revival before I start ...



????????????????System battery
 voltage ...

2019?1?21??? ?????????????????????????????????
 ?????????????????????????????? ...

BQ25820: Unable to charge battery and REGN always 0V.

Jan 8, 2025 · Here is a plot I captured during the charging phase--green represents the battery voltage, while blue shows the battery current. Meanwhile, my register at 0x21 fluctuates ...

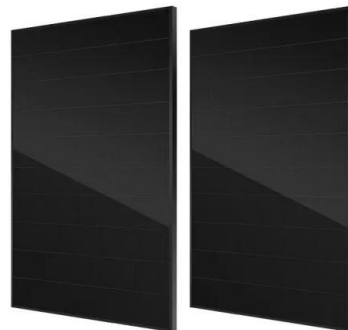


Batt Voltage Low Error

Oct 4, 2024 · Right? Is this still the old battery? Lots of functions don't work predictably when the battery is degraded. In this case it's possible some combination of battery state and load ...

[SOLVED] Brand new 12V battery measuring 0 volts

Mar 18, 2011 · Re: Brand new 12V battery measuring 0 volts A new battery should have some voltage to read, it may be low and need a charge but I've never seen a wet cell or conventional ...



Why Your Lithium Battery Goes Into Low Voltage Disconnect ...

Jul 14, 2025 · Low Voltage Disconnect (LVD) occurs when the voltage of your lithium battery drops too low -- typically below 10.5V to 11.0V -- depending on the battery's BMS settings. ...

How to Test a Lithium Ion Battery with a Multimeter: A ...

Feb 14, 2025 · Lithium ion batteries are widely used in various electronic devices, from smartphones to electric vehicles, and understanding their health is crucial for optimal ...



Troubleshoot LifePo4 Voltage Drop

Jun 15, 2020 · Its possible the connection surge is exceeding the batteries internal current limit, and is tripping protection mode. Another option is to charge the system with a lead acid 12v ...

Battery Min voltage shows 0v

Oct 20, 2024 · Battery Min voltage shows 0v
Hello, This is a system that I have at a cabin.
Victron 100/20. With (2) 115ah batteries in parallel. I use the load out to control a couple of lights. And ...



Understanding 0V Activation: How XTAR Chargers Revive ...

Dec 29, 2023 · Welcome to the world of battery charging, where technology meets practicality. At XTAR, we're committed to enhancing your battery-charging experience. One of our most ...

Why Your Lithium Battery Goes Into Low Voltage Disconnect ...

Jul 14, 2025 · ? What Is Low Voltage Disconnect?
Low Voltage Disconnect (LVD) occurs when the voltage of your lithium battery drops too low -- typically below 10.5V to 11.0V -- depending ...



Power at the PV port when only BATT is connected

Mar 21, 2025 · Hi all, after a misshapening where the solar panel got short circuit, the MPPT now got power at the PV port even though no panel is connected (measured ~11,97V @midnight ...

Why does the battery voltage become 0 Volt ? - LLT POWER ...

Moreover, there is no undervoltage protection when connected to the B+ and B- terminal directly, wich will be very easy to discharge the battery pack to 0V. C. The discharge MOS of the ...



How To Recover 0v and Low Voltage Cells and Batteries

In this article, we will explain how to recover lithium ion and lead acid batteries from a 0V state. We will also go over some of the limitations of recovering cells from 0V.

How to Revive a Dead NiMH Battery: Step-by ...

Jul 21, 2025 · A NiMH battery is considered fully discharged around 1.0V, but most chargers will reject it as "dead" if its resting voltage falls below the 0.5V ...



[SOLVED] Brand new 12V battery measuring 0 volts

Mar 18, 2011 · The 12 V battery supplies voltage to the solenoid to be able to open and close etc. When i measured the battery using my voltmeter on site there was a reading of 0 volts. Which ...

Renogy battery is in BMS state. How to use BMV-712 to unlock

Jan 5, 2020 · "The BMS will protect and shut the battery down (0V) when it is over-discharged or short circuited. In these rare cases the user will need to activate the battery using an external ...



Contact Us

For catalog requests, pricing, or partnerships, please visit:
<https://www.chrisnell.co.za>