

Solar Storage Container Solutions

Base station as wireless communication relay



Overview

What is the difference between a base station and a relay station?

In summary, both base stations and relay stations play indispensable roles in wireless communication systems. As the core of mobile communication networks, base stations provide access services and network management functions, while relay stations effectively expand the coverage range of communication through signal relay and amplification.

What is a relay station?

A Relay Station (RS) refers to a communication infrastructure component that is used to extend the coverage and enhance the performance of wireless communication networks. It acts as an intermediate node between the base station and user equipment (UE) in wireless communication systems. The primary function of a relay station.

Why do we need a relay station?

In wireless communication systems, the signal strength and quality degrade as the distance between the base station and the user equipment increases. This leads to coverage holes and reduced capacity in certain areas. Relay Stations are deployed to overcome these limitations and improve the overall network performance.

What is a wireless base station?

With the help of the system, a wireless base station is an example of an access point that acts between a wireless node and with other wired PCs and peripherals. A device that is placed between network segments (or “subnets”) to ensure that traffic is properly routed between different subnets.

What is a base station and a repeater?

Base Station and Repeater are two important components in wireless communication systems. They play different roles in communication networks

and have their own unique functions and characteristics.

How does a relay station transmit data to a UE?

The relay station then forwards this signal to the base station. Similarly, when the base station wants to send data to a UE located within the relay station's coverage area, it transmits the signal to the relay station, which then amplifies and forwards it to the UE.

Base station as wireless communication relay



Hybrid beamforming with relay and dual-base stations ...

May 1, 2022 · The selected base station executed hybrid beamforming based on an accurate channel state information prediction once the user equipment was directly or indirectly (i.e. via ...

Relay Base-Station Handover in a 5G Environment

Apr 25, 2025 · Keywords: 5G, Base Station, RAN, Relay, RoF. and constrained coverage extent as well as interference in high-frequency bands. The proposed research designs a 5G Radio ...



UAV-Assisted Wireless Powered Relay Networks With

Jul 31, 2020 · We optimize the performance of an unmanned aerial vehicle (UAV)-assisted wireless powered relay network (WPRN), where the UAV is used as a radio-frequency (RF) ...

Implementation of multi-UAV communication relay function

...

Mar 26, 2025 · In contrast to existing relay designs, this work proposes a relay transmission

framework based on 3GPP communication protocols. The core innovation lies in the ...



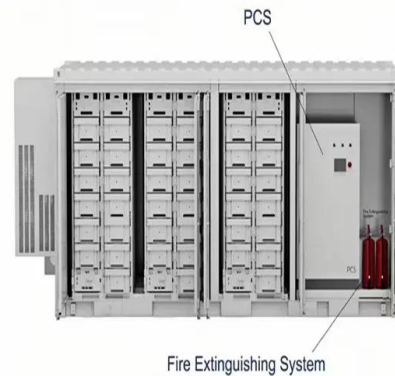
Unmanned Aerial Vehicle Relay System: Performance

Apr 6, 2020 · The deployment of unmanned aerial vehicle (UAV) in wireless communication as a flying base station (BS) or relay is expected to be dominant in the following years to enhance ...



ARS (Advanced Relay Station)

Feb 28, 2023 · Introduction: An Advanced Relay Station (ARS) is a type of communication system that acts as a repeater to enhance and extend the range of wireless networks. ARS can ...



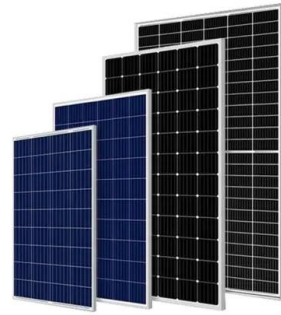
Signal Enhancement for Long-Range Drone Operation

Feb 9, 2025 · Wireless long-distance communication device for base stations that allows high-altitude drones carrying base stations to communicate reliably over long distances.

Base Station and Relay Station Broadband Network Planning

...

Sep 5, 2013 · In this paper, we present simultaneous planning technique for Base Stations (BSs) and Relay Stations (RSs) for a broadband wireless network while taking data fl



What Is the Role of a Base Station in Wireless Communication?

Jun 27, 2025 · Base stations are the backbone of wireless communication networks, playing a pivotal role in signal transmission, network reliability, and high-speed data connectivity. As

...

An Efficient Base Station and Relay Station Placement ...

Jan 28, 2015 · A multi-hop relay network has been widely considered as a promising solution to extend the coverage area and to reduce the deployment cost by the placement of relay ...



A survey on UAV-assisted wireless communications

Aug 1, 2023 · Moreover, dedicated UAVs could be deployed as aerial base stations (BSs), access points (APs) or relays, to assist terrestrial wireless communications from the sky, leading to

...

Joint Optimization of Base and Relay Station ...

Apr 26, 2025 · The optimization of 5G base station deployment plays a very crucial role in ensuring high data rates with low latency. In the early days of wireless communication, base ...

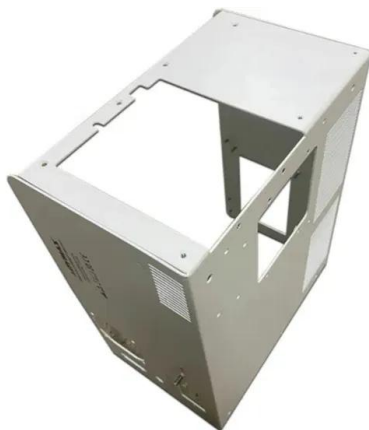


Joint Optimization of Base and Relay Station ...

Apr 26, 2025 · Strategic planning in 5G network development is crucial, especially for optimizing base station placements. The increasing demand for higher data rates, ultra-low latency, and ...

What is the difference between Base Station and Repeater

In summary, both base stations and relay stations play indispensable roles in wireless communication systems. As the core of mobile communication networks, base stations ...



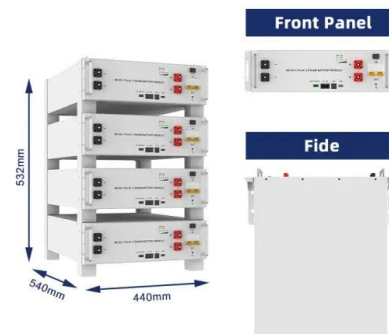
Optimizing redeployment of communication base station

Feb 6, 2025 · Ratheesh et al. [13] proposed a BS-Relay Station deployment technology based on joint clustering. The algorithm takes into account network throughput and coverage to achieve ...

Cooperative Communication Resource Allocation Strategies

...

Nov 1, 2022 · This review paper compiles all such strategies and discusses cooperative communication resource allocation techniques in a broader scope. The review is designed in ...



Relay Base-Station Handover in a 5G Environment

Nov 2, 2017 · Also, a user staying at the border of an eNB's communication range may also receive poor radio signals from the eNB. In fact, wireless signals emitted by an eNB, e.g., B, ...

A survey and tutorial of wireless relay network protocols ...

Mar 1, 2013 · 1. Introduction Cooperative communication is a specific area of wireless communication that has been extensively explored within the last decade. The concept of ...



Performance Evaluation of Next-Generation Wireless (5G) UAV Relay

Apr 15, 2020 · Future wireless communication, especially the densified 5G network using millimeter-Wave (mmWave) will bring numerous innovations to the current telecommunication ...

Load Balancing by Dynamic Base Station Relay Station ...

Nov 12, 2021 · Abstract--In this paper, we propose a relay-assisted load balancing scheme in cellular networks. The relay stations can be dynamically associated with different base ...



UAV relay network deployment through the area with barriers

Oct 1, 2023 · Multiple UAVs can be used to provide reliable communications where each UAV serves as an aerial wireless base station when the cellular network goes down [1], [2], [3].

...

Contact Us

For catalog requests, pricing, or partnerships, please visit:
<https://www.chrisnell.co.za>